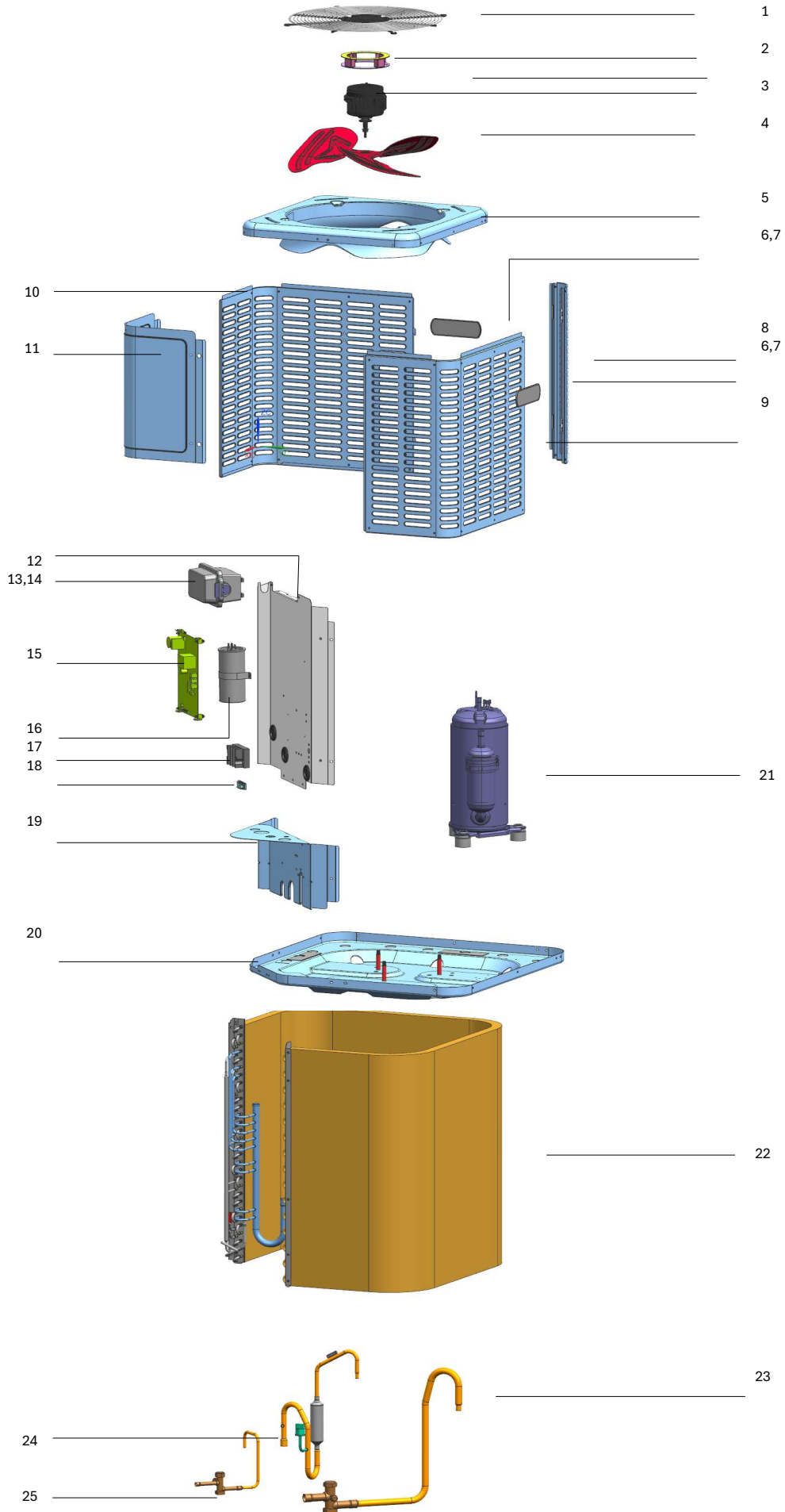


AC14 EXPLODED VIEW



Parts List - AC-I-18AC14

PART #	PART MODEL	UNIT MODEL
602938000004	Air Outlet Grille (Wire Mesh)	AC-I-18AC14
601247000091	Motor Mounting Bracket	AC-I-18AC14
602401700044	Brushless DC Motor	AC-I-18AC14
602907200002	Axial Fan Blade(Metallic)	AC-I-18AC14
601238000092	Top Cover Insulating Panel Assembly	AC-I-18AC14
601238000085	Stand column	AC-I-18AC14
601238000093	Right Side Panel	AC-I-18AC14
601238000095	Left Side Panel	AC-I-18AC14
601238000089	Upper Side Panel	AC-I-18AC14
601238000110	Control Board Mounting Plate Assembly	AC-I-18AC14
602315100006	Contacto box and Contactor	AC-I-18AC14
601338000008	Outdoor Control Board	AC-I-18AC14
602403300007	Compressor capacitor	AC-I-18AC14
602404700062	Terminal Block	AC-I-18AC14
601103400002	Wire Clamp	AC-I-18AC14
601238000081	Lower Side Panel	AC-I-18AC14
601238000091	Outdoor Unit Chassisn Assembly	AC-I-18AC14
601403100020	Compressor	AC-I-18AC14
601530000169	Condensor Assembly	AC-I-18AC14
601637001043	Compressor Suction Pipe Assembly	AC-I-18AC14
601602100003	Stop valve(Gas side)	AC-I-18AC14
601630000487	Compressor Exhaust Pipe Assembly	AC-I-18AC14
602405F00013	High Pressure switch	AC-I-18AC14
601637000896	High Pressure Valve Assembly	AC-I-18AC14
601602100001	Stop valve(liquid side)	AC-I-18AC14
602301500089	Temperature Sensor(T3 T4 TP)	AC-I-18AC14

Parts List - AC-I-24AC14

PART #	PART MODEL	UNIT MODEL
602938000004	Air Outlet Grille (Wire Mesh)	AC-I-24AC14
601247000091	Motor Mounting Bracket	AC-I-24AC14
602401700044	Brushless DC Motor	AC-I-24AC14
602907200002	Axial Fan Blade(Metallic)	AC-I-24AC14
601238000092	Top Cover Insulating Panel Assembly	AC-I-24AC14
601238000085	Stand column	AC-I-24AC14
601238000093	Right Side Panel	AC-I-24AC14
601238000095	Left Side Panel	AC-I-24AC14
601238000089	Upper Side Panel	AC-I-24AC14
601238000110	Control Board Mounting Plate Assembly	AC-I-24AC14
602315100006	Contactora box and Contactora	AC-I-24AC14
601338000008	Outdoor Control Board	AC-I-24AC14
602403300007	Compressor capacitor	AC-I-24AC14
602404700062	Terminal Block	AC-I-24AC14
601103400002	Wire Clamp	AC-I-24AC14
601238000081	Lower Side Panel	AC-I-24AC14
601238000091	Outdoor Unit Chassis Assembly	AC-I-24AC14
601403100020	Compressor	AC-I-24AC14
601530000169	Condensora Assembly	AC-I-24AC14
601637001043	Compressor Suction Pipe Assembly	AC-I-24AC14
601602100003	Stop valve(Gas side)	AC-I-24AC14
601630000487	Compressor Exhaust Pipe Assembly	AC-I-24AC14
602405F00013	High Pressure switch	AC-I-24AC14
601637000896	High Pressure Valve Assembly	AC-I-24AC14
601602100001	Stop valve(liquid side)	AC-I-24AC14
602301500089	Temperature Sensor(T3 T4 TP)	AC-I-24AC14

Parts List - AC-I-30AC14

PART #	PART MODEL	UNIT MODEL
602938000003	Air Outlet Grille (Wire Mesh)	AC-I-30AC14
601247000091	Motor Mounting Bracket	AC-I-30AC14
602401700044	Brushless DC Motor	AC-I-30AC14
602907200001	Axial Fan Blade(Metallic)	AC-I-30AC14
601238000102	Top Cover Insulating Panel Assembly	AC-I-30AC14
601238000085	Stand column	AC-I-30AC14
601238000097	Right Side Panel	AC-I-30AC14
601238000099	Left Side Panel	AC-I-30AC14
601238000089	Upper Side Panel	AC-I-30AC14
601238000110	Control Board Mounting Plate Assembly	AC-I-30AC14
602315100006	Contactora box and Contactora	AC-I-30AC14
601338000008	Outdoor Control Board	AC-I-30AC14
602403300003	Compressor capacitor	AC-I-30AC14
602404700062	Terminal Block	AC-I-30AC14
601103400002	Wire Clamp	AC-I-30AC14
601238000081	Lower Side Panel	AC-I-30AC14
601238000101	Outdoor Unit Chassis Assembly	AC-I-30AC14
601403100019	Compressor	AC-I-30AC14
601530000097	Condensora Assembly	AC-I-30AC14
601637001047	Compressor Suction Pipe Assembly	AC-I-30AC14
601602100003	Stop valve(Gas side)	AC-I-30AC14
601630000490	Compressor Exhaust Pipe Assembly	AC-I-30AC14
602405F00013	High Pressure switch	AC-I-30AC14
601637000898	High Pressure Valve Assembly	AC-I-30AC14
601602100001	Stop valve(liquid side)	AC-I-30AC14
602301500089	Temperature Sensor(T3 T4 TP)	AC-I-30AC14

Parts List - AC-I-36AC14

PART #	PART MODEL	UNIT MODEL
602938000003	Air Outlet Grille (Wire Mesh)	AC-I-36AC14
601247000091	Motor Mounting Bracket	AC-I-36AC14
602401700044	Brushless DC Motor	AC-I-36AC14
602907200001	Axial Fan Blade(Metallic)	AC-I-36AC14
601238000102	Top Cover Insulating Panel Assembly	AC-I-36AC14
601238000085	Stand column	AC-I-36AC14
601238000097	Right Side Panel	AC-I-36AC14
601238000099	Left Side Panel	AC-I-36AC14
601238000089	Upper Side Panel	AC-I-36AC14
601238000110	Control Board Mounting Plate Assembly	AC-I-36AC14
602315100006	Contactoer box	AC-I-36AC14
601338000008	Outdoor Control Board	AC-I-36AC14
602403300003	Compressor capacitor	AC-I-36AC14
602404700062	Terminal Block	AC-I-36AC14
601103400002	Wire Clamp	AC-I-36AC14
601238000081	Lower Side Panel	AC-I-36AC14
601238000101	Outdoor Unit Chassisn Assembly	AC-I-36AC14
601403100019	Compressor	AC-I-36AC14
601530000097	Condensor Assembly	AC-I-36AC14
601637001047	Compressor Suction Pipe Assembly	AC-I-36AC14
601602100003	Stop valve(Gas side)	AC-I-36AC14
601630000490	Compressor Exhaust Pipe Assembly	AC-I-36AC14
602405F00013	High Pressure switch	AC-I-36AC14
601637000898	High Pressure Valve Assembly	AC-I-36AC14
601602100001	Stop valve(liquid side)	AC-I-36AC14
602301500089	Temperature Sensor(T3 T4 TP)	AC-I-36AC14

Parts List - AC-I-42AC14

PART #	PART MODEL	UNIT MODEL
602938000003	Air Outlet Grille (Wire Mesh)	AC-I-42AC14
601247000091	Motor Mounting Bracket	AC-I-42AC14
602401700044	Brushless DC Motor	AC-I-42AC14
602401700044	Axial Fan Blade(Metallic)	AC-I-42AC14
601238000102	Top Cover Insulating Panel Assembly	AC-I-42AC14
601238000087	Stand column	AC-I-42AC14
601238000103	Right Side Panel	AC-I-42AC14
601238000104	Left Side Panel	AC-I-42AC14
601238000089	Upper Side Panel	AC-I-42AC14
601238000110	Control Board Mounting Plate Assembly	AC-I-42AC14
602315100006	Contacto box and Contactor	AC-I-42AC14
601338000008	Outdoor Control Board	AC-I-42AC14
602403300014	Compressor capacitor	AC-I-42AC14
602404700062	Terminal Block	AC-I-42AC14
601103400002	Wire Clamp	AC-I-42AC14
601238000082	Lower Side Panel	AC-I-42AC14
601238000107	Outdoor Unit Chassisn Assembly	AC-I-42AC14
601402100001	Compressor	AC-I-42AC14
601530000099	Condensor Assembly	AC-I-42AC14
601637000904	Compressor Suction Pipe Assembly	AC-I-42AC14
601602100003	Stop valve(Gas side)	AC-I-42AC14
601630000404	Compressor Exhaust Pipe Assembly	AC-I-42AC14
602405F00013	High Pressure switch	AC-I-42AC14
601637000898	High Pressure Valve Assembly	AC-I-42AC14
601602100001	Stop valve(liquid side)	AC-I-42AC14
602301500097	Temperature Sensor(T3 T4 TP)	AC-I-42AC14

Parts List - AC-I-48AC14

PART #	PART MODEL	UNIT MODEL
602938000003	Air Outlet Grille (Wire Mesh)	AC-I-48AC14
601247000091	Motor Mounting Bracket	AC-I-48AC14
602401700044	Brushless DC Motor	AC-I-48AC14
602401700044	Axial Fan Blade(Metallic)	AC-I-48AC14
601238000102	Top Cover Insulating Panel Assembly	AC-I-48AC14
601238000087	Stand column	AC-I-48AC14
601238000103	Right Side Panel	AC-I-48AC14
601238000104	Left Side Panel	AC-I-48AC14
601238000089	Upper Side Panel	AC-I-48AC14
601238000110	Control Board Mounting Plate Assembly	AC-I-48AC14
602315100006	Contacto box and Contactor	AC-I-48AC14
601338000008	Outdoor Control Board	AC-I-48AC14
602403300014	Compressor capacitor	AC-I-48AC14
602404700062	Terminal Block	AC-I-48AC14
601103400002	Wire Clamp	AC-I-48AC14
601238000082	Lower Side Panel	AC-I-48AC14
601238000107	Outdoor Unit Chassisn Assembly	AC-I-48AC14
601402100001	Compressor	AC-I-48AC14
601530000099	Condensor Assembly	AC-I-48AC14
601637000904	Compressor Suction Pipe Assembly	AC-I-48AC14
601602100003	Stop valve(Gas side)	AC-I-48AC14
601630000404	Compressor Exhaust Pipe Assembly	AC-I-48AC14
602405F00013	High Pressure switch	AC-I-48AC14
601637000898	High Pressure Valve Assembly	AC-I-48AC14
601602100001	Stop valve(liquid side)	AC-I-48AC14
602301500097	Temperature Sensor(T3 T4 TP)	AC-I-48AC14

Parts List - AC-I-60AC14

PART #	PART MODEL	UNIT MODEL
602938000003	Air Outlet Grille (Wire Mesh)	AC-I-60AC14
601247000091	Motor Mounting Bracket	AC-I-60AC14
602401700044	Brushless DC Motor	AC-I-60AC14
602401700044	Axial Fan Blade(Metallic)	AC-I-60AC14
601238000102	Top Cover Insulating Panel Assembly	AC-I-60AC14
601238000087	Stand column	AC-I-60AC14
601238000103	Right Side Panel	AC-I-60AC14
601238000104	Left Side Panel	AC-I-60AC14
601238000089	Upper Side Panel	AC-I-60AC14
601238000110	Control Board Mounting Plate Assembly	AC-I-60AC14
602315100006	Contactora box and Contactora	AC-I-60AC14
601338000008	Outdoor Control Board	AC-I-60AC14
602403300014	Compressor capacitor	AC-I-60AC14
602404700062	Terminal Block	AC-I-60AC14
601103400002	Wire Clamp	AC-I-60AC14
601238000082	Lower Side Panel	AC-I-60AC14
601238000107	Outdoor Unit Chassis Assembly	AC-I-60AC14
601402100001	Compressor	AC-I-60AC14
601530000099	Condensora Assembly	AC-I-60AC14
601637000094	Compressor Suction Pipe Assembly	AC-I-60AC14
601602100003	Stop valve(Gas side)	AC-I-60AC14
601630000404	Compressor Exhaust Pipe Assembly	AC-I-60AC14
602405F00013	High Pressure switch	AC-I-60AC14
6016370000898	High Pressure Valve Assembly	AC-I-60AC14
601602100001	Stop valve(liquid side)	AC-I-60AC14
602301500097	Temperature Sensor(T3 T4 TP)	AC-I-60AC14