

Submittal Data Sheet

Indoor Unit Model#: AC-I-30AH14
Outdoor Unit Model#: AC-I-30HP14

30K R32 Ducted Air Handler & 30K Top Discharge Heat Pump Condenser

Location:	Approval:
Engineer:	Date:
Submitted to:	Construction:
Submitted by:	Unit #:
Reference:	Drawing #:

System Product Code: 81017555959
Indoor Unit Product Code: 81017555232
Outdoor Unit Product Code: 81017555881



INDOOR UNIT SPECIFICATIONS

Indoor Throttle	Type	Piston
Indoor Fan Airflow (Hi/Lo)	CFM	950 / 520
Indoor Noise Level (Hi/Lo)	dB(A)	40 / 36
Unit Dimensions (WxDxH)	in	21.02 x 21.02 x 49.02
	mm	534 x 534 x 1245
Packing Dimensions (WxDxH)	inch	24.41 x 26.57 x 50.20
	mm	620 x 675 x 1275
Net Weight	lbs	137
	kg	62.0
Gross Weight	lbs	151
	kg	68.5

OUTDOOR UNIT SPECIFICATIONS

Outdoor Throttle	Type	Capillary
Outdoor Fan Airflow (Max.)	CFM	2650
Outdoor Noise Level	dB(A)	59
Compressor	Type	Rotary
Compressor Refrigerant Oil	Type	VG74
Compressor Refrigerant Oil Volume	ml	410
Unit Dimensions (WxDxH)	in	29.13 x 29.13 x 25.00
	mm	740 x 740 x 635
Packing Dimensions (WxDxH)	in	30.32 x 30.32 x 26.18
	mm	770 x 770 x 665
Net Weight	lbs	139
	kg	63.1
Gross Weight	lbs	148
	kg	67.0

EFFICIENCY RATINGS

Cooling		Heating	
SEER2	14.3	HSPF2-4	7.5
EER2	11.7	COP	3.7

COOLING PERFORMANCE

Cooling (Btu/hr)	
Rated Capacity	30000
Moisture Removal (L/h)	2.8
Standard Operating Range (°F/°C)	23°F ~ 125.6°F (-5°C ~ 52°C)
Rated Cooling Conditions:	Indoor: 80°F DB/67°F WB Outdoor: 95°F DB/75°F WB

HEATING PERFORMANCE

Heating (Btu/hr)	
1. @ 47°F Rated	29000
2. @ 17°F Rated	18500
3. @ 5°F Rated: Capacity / COP	15500 / 2.2
3. @ 5°F Max: Capacity	15500
Standard Operating Range (°F/°C)	-4°F ~ 86°F (-20°C ~ 30°C)
1. Rated Heating Conditions:	Indoor: 70°F DB/60°F WB Outdoor: 47°F DB/43°F WB
2. Rated Heating Conditions:	Indoor: 70°F DB/60°F WB Outdoor: 17°F DB/15°F WB
3. Heating Conditions, Compressor Operating at Max. Frequency	Indoor: 70°F DB/60°F WB Outdoor: 5°F DB/5°F WB

FEATURES

- Multi-position installation: horizontal (left or right), vertical (up or down)
- External static pressure up to 0.80 In.W.G
- 1 inch R4.2 fiberglass free insulation reduces condensation and boosts efficiency (optional)
- Optional Auxiliary heat kit up to 20kW
- Easy Maintenance
- Multiple control options available:
 - Wired controller with built-in WiFi
 - Third-Party 24V Thermostat
- Adaptive Control System
- Crankcase heater equipped as standard

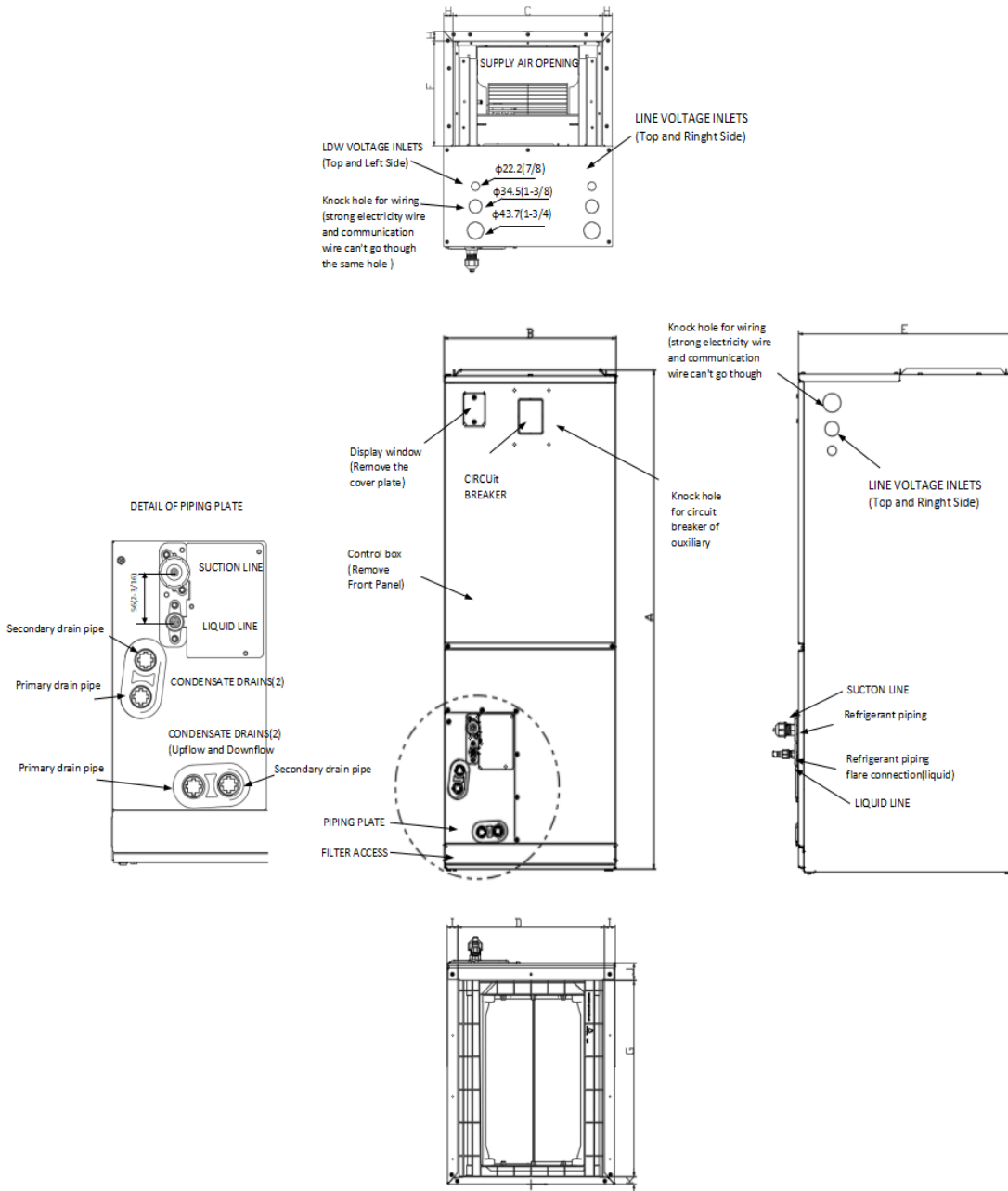
ELECTRICAL SPECIFICATIONS

Outdoor Unit Power Supply	V, Ph, Hz	208/230V, 60 Hz, 1 Ph
Indoor Unit Power Supply	V, Ph, Hz	208/230V, 60 Hz, 1 Ph
Communication Wiring	Type	AWG 20x3 Shielded
ODU Minimum Circuit Ampacity (MCA)	A	20
ODU Max. Overcurrent Protection (Max Fuse or Breaker)	A	25
Cooling Operation System Power Input	W	2564
Heating Operation System Power Input	W	2360
Compressor Rated Load Amps	A	9.8
Outdoor Fan Motor Rated Load Amps	A	0.92
Outdoor Fan Motor Output	W	200
Indoor Fan Motor Rated Load Amps	A	2.23
Indoor Fan Motor Output	W	420

REFRIGERANT PIPING SPECIFICATIONS

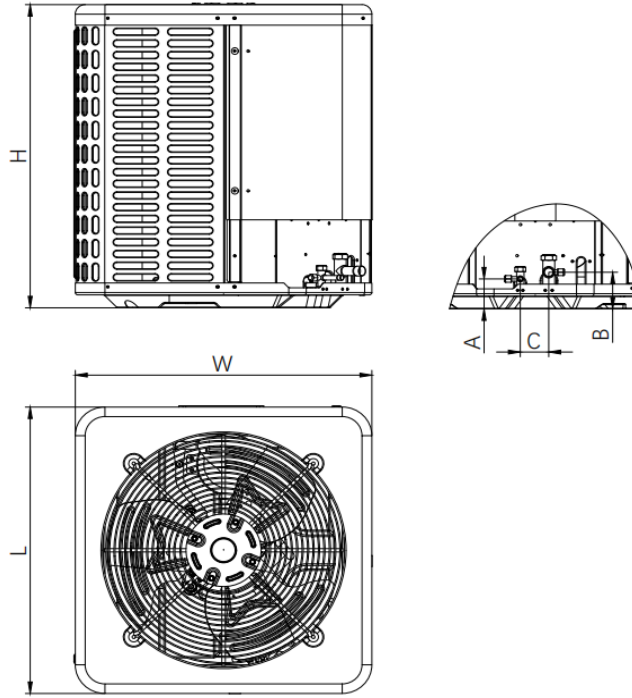
Refrigerant	Type	R32
Refrigerant Charge Amount (Outdoor unit pre-charged)	oz	81.12
	kg	2.3
Additional Charge of Refrigerant	oz/ft	0.52
	g/m	48
N.A. Design Pressure	psi	609 / 174
Liquid Side	in	3/8"
	mm	9.52
Gas Side	in	3/4"
	mm	19.00
Max. Piping Length	ft	131
	m	39.92
Max. Height Difference	ft	82
	m	24.99
Max. Pre-Charged Piping Length	ft	24.6
	m	7.5
Connection Method	Type	Flare to Braze

Indoor Unit Dimensions



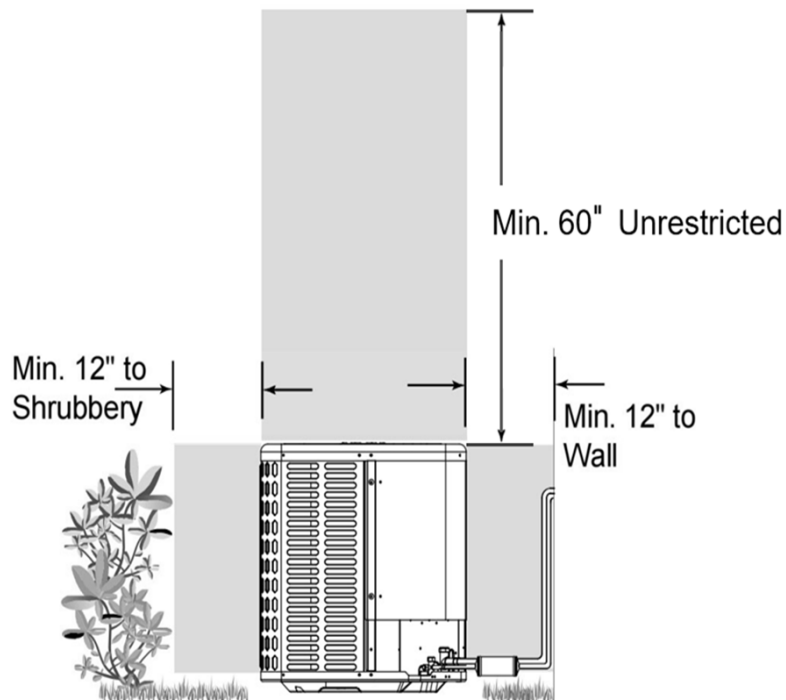
Dimensions		Model	18K/24K		30K/36K		42K/48K/60K	
			inch	mm	inch	mm	inch	mm
A	Model Height		45-3/4	1162	49-49/64	1264	53-47/64	1365
B	Model width		17-41/64	448	21-9/64	537	24-39/64	625
C	Supply Air Opening width		15-5/8	397	19-9/64	486	22-19/32	574
D	Return Air Opening Width		15-25/64	391	18-47/64	476	22-23/64	568
E	Model Depth		21-7/64	536	21-7/64	536	21-7/64	536
F	Supply Air Opening Depth		10-9/32	261	10-9/32	261	10-9/32	261
G	Return Air Opening Depth		18-23/32	475.5	18-23/32	475.5	18-23/32	475.5
H	Supply Air Opening Clearance		15/16	24	15/16	24	15/16	24
I	Return Air Opening Side Clearance		1-1/8	28.5	1-1/8	28.5	1-1/8	28.5
J	Return Air Opening Front Clearance		1-21/32	42	1-21/32	42	1-21/32	42
K	Return Air Opening Back Clearance		45/64	18	45/64	18	45/64	18

Outdoor Unit Dimensions



Dimensions		Model	18K/24K		30K/36K		42K/48K/60K	
			inch	mm	inch	mm	inch	mm
W	Model width		23-5/8	600	29-9/64	740	29-9/64	740
L	Model length		23-5/8	600	29-9/64	740	29-9/64	740
H	Model height		25	635	25	635	32-7/8	835
A	Liquid side valve height		2-31/64	63	2-31/64	63	2-31/64	63
B	Distance between two valves		3-1/32	77	3-1/32	77	3-1/32	77
C	Gas side valve height		2-9/32	58	2-9/32	58	2-9/32	58

Outdoor Unit Installation Instructions & Clearance Requirements



Indoor Unit Fan Performance

