

Submittal Data Sheet

Indoor Unit Model#: AC-I-1824ACL-17

Outdoor Unit Model#: AC-I-24AC14

R32 24K 17.5" EVAPORATOR A-COIL & 24K TOP-DISCHARGE AC-COOLING ONLY CONDENSER

| | |
|---------------|---------------|
| Location: | Approval: |
| Engineer: | Date: |
| Submitted to: | Construction: |
| Submitted by: | Unit #: |
| Reference: | Drawing #: |

System UPC Product Code: 810175554167
A-Coil UPC Product Code: 810175554037
Outdoor Unit UPC Product Code: 810175554099



EFFICIENCY RATINGS

Cooling

| | |
|-------|-------|
| SEER2 | 14.30 |
| EER2 | 11.70 |

COOLING PERFORMANCE & OPERATING TEMPERATURE

Cooling (Btu/hr)

| | |
|------------------------|-------|
| Rated Capacity | 24000 |
| System Power Input (W) | 2050 |
| Rated Current (A) | 9.30 |

Ambient Temperature Range (Cooling Operation)

| | | |
|--------------|----|--------------|
| Indoor Unit | °F | 60°F ~ 90°F |
| | °C | 16°C ~ 32°C |
| Outdoor Unit | °F | 5°F ~ 131°F |
| | °C | -15°C ~ 55°C |

ELECTRICAL SPECIFICATIONS

| | |
|----------------------------|--------------------------------------|
| Indoor Power Supply | 220-230V, 1Ph, 60Hz |
| Outdoor Power Supply | 208/230V, 1 Ph, 60Hz |
| Voltage Range (V) | 187 ~ 253 |
| Outdoor MCA (A) | 13 |
| Outdoor MOP (A) | 20 |
| MCA: Min. circuit amps (A) | MOP: Max. overcurrent protection (A) |

EVAPORATOR A-COIL SPECIFICATIONS

| | | |
|-------------------|------|-----------------------|
| Dimension (W×D×H) | inch | 17.52 x 21.02 x 18.00 |
| | mm | 445 x 534 x 457 |
| Package (W×D×H) | inch | 21.26 x 27.36 x 20.28 |
| | mm | 540 x 695 x 515 |
| Net/Gross Weight | lbs | 42.0 / 50.0 |
| | kg | 19.0 / 22.5 |

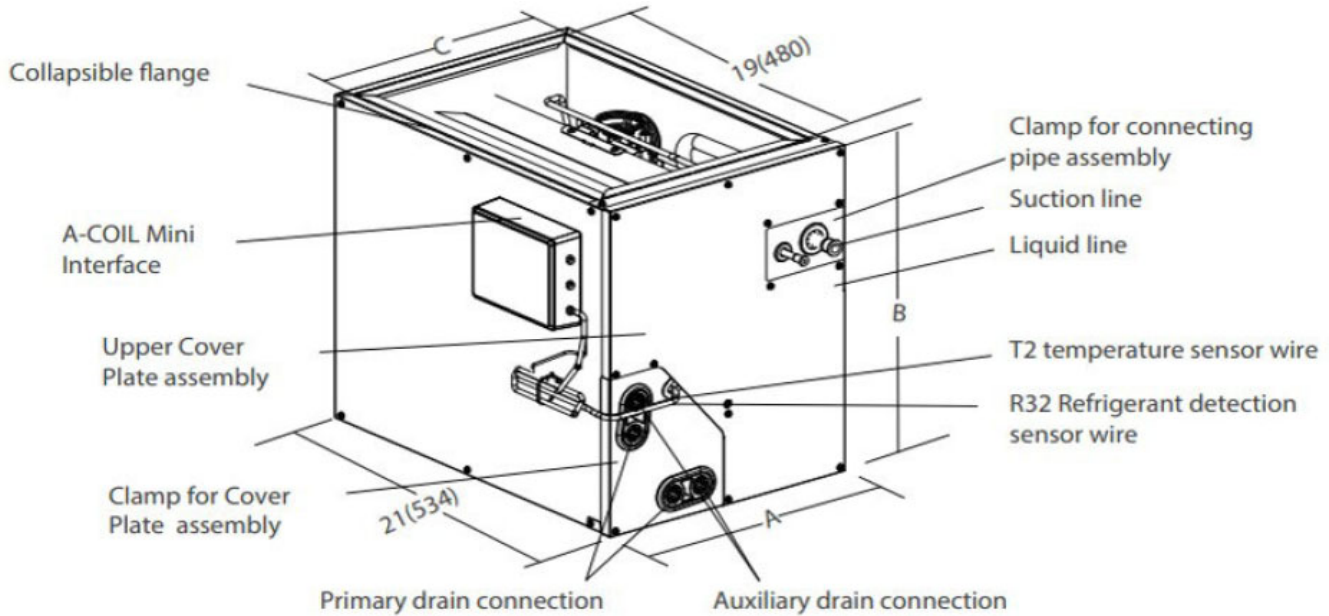
OUTDOOR UNIT SPECIFICATIONS

| | | |
|----------------------------------|-----------------|-----------------------|
| Compressor Type | Rotary | |
| Compressor Model | KSF200N1VKTB3 | |
| Compressor Capacity (W) | 7590 | |
| Compressor Input (W) | 1710 | |
| Compressor Rated Current RLA (A) | 8.4 | |
| Refrigerant Oil Type | Ester Oil VG74 | |
| Refrigerant Oil Charge (mL) | 640 | |
| Outdoor Noise Level (dBA) | 58 | |
| Outdoor Airflow (CFM) | 2000 | |
| Outdoor Fan Motor Qty. | 1 | |
| Outdoor Fan Motor Input (W) | 200 | |
| Outdoor Fan Motor RLA (A) | 0.92 | |
| Dimension (W×D×H) | inch | 23.62 x 23.62 x 25.00 |
| | mm | 600 x 600 x 635 |
| Package (W×D×H) | inch | 25.98 x 25.98 x 26.18 |
| | mm | 660 x 660 x 665 |
| Net/Gross Weight | lbs | 119.0 / 126.0 |
| | kg | 54.0 / 57.0 |
| RLA: Rated Load Amps | W: Watts | |

REFRIGERANT & PIPING SPECIFICATIONS

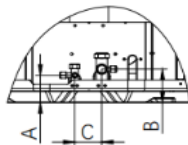
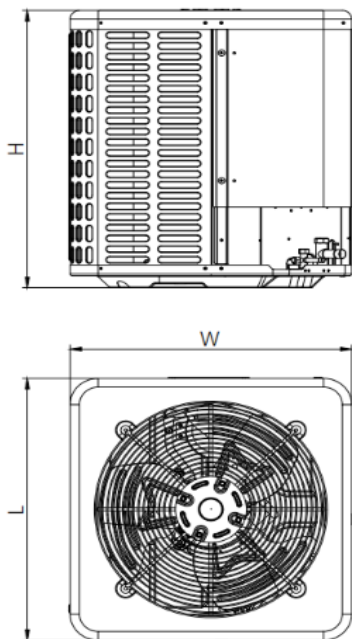
| | | |
|---|-----------------|----------------|
| Throttle type (Indoor) | TXV for Cooling | |
| Refrigerant Type | R32 | |
| Refrigerant Charge | oz | 52.91 |
| | kg | 1.50 |
| Additional Charge of Refrigerant | oz/ft | 0.52 |
| | g/m | 48.0 |
| Liquid Side | in | 3/8" |
| | mm | 9.53 |
| Gas Side | in | 3/4" |
| | mm | 19.05 |
| Max. Piping Length (Condenser Pre-Charge) | ft | 24.6 |
| | m | 7.5 |
| Max. Piping Length | ft | 131 |
| | m | 40 |
| Max. Height Difference | ft | 82 |
| | m | 25 |
| Drainage Water Pipe Diameter (O.D.) | in | 3/4" |
| | mm | 19.05 mm |
| Connection Method | Indoor Unit | Braze |
| | Outdoor Unit | Flare to Braze |

EVAPORATOR A-COIL DIMENSIONS



| Model | 18K/24K A-Coil 17.5" | | 30K/36K A-Coil 17.5" | | 30K/36K A-Coil 21" | |
|------------|----------------------|-----|----------------------|-----|--------------------|-----|
| Dimensions | inch | mm | inch | mm | inch | mm |
| A | 17-1/2 | 445 | 17-1/2 | 445 | 21 | 534 |
| B | 18 | 457 | 23-1/2 | 599 | 23-1/2 | 599 |
| C | 16-2/5 | 416 | 16-2/5 | 416 | 19-3/4 | 505 |
| Model | 48K/60K A-Coil 21" | | 48K/60K A-Coil 24.5" | | | |
| Dimensions | inch | mm | inch | mm | | |
| A | 21 | 534 | 24-1/2 | 622 | | |
| B | 27-4/5 | 706 | 27-4/5 | 706 | | |
| C | 19-3/4 | 505 | 23-2/5 | 594 | | |

OUTDOOR UNIT DIMENSIONS



| Dimensions | | Model | | 18K/24K | | 30K/36K | | 42K/48K/60K | |
|------------|-----------------------------|---------|-----|---------|-----|---------|-----|-------------|-----|
| | | inch | mm | inch | mm | inch | mm | | |
| W | Model width | 23-5/8 | 600 | 29-9/64 | 740 | 29-9/64 | 740 | 29-9/64 | 740 |
| L | Model length | 23-5/8 | 600 | 29-9/64 | 740 | 29-9/64 | 740 | 29-9/64 | 740 |
| H | Model height | 25 | 635 | 25 | 635 | 32-7/8 | 835 | | |
| A | Liquid side valve height | 2-31/64 | 63 | 2-31/64 | 63 | 2-31/64 | 63 | | |
| B | Distance between two valves | 3-1/32 | 77 | 3-1/32 | 77 | 3-1/32 | 77 | | |
| C | Gas side valve height | 2-9/32 | 58 | 2-9/32 | 58 | 2-9/32 | 58 | | |