

# Submittal Data Sheet

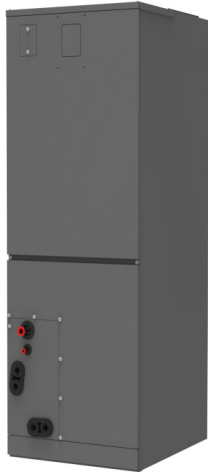
Indoor Unit Model#: AC-I-36AH14

Outdoor Unit Model#: AC-I-36AC14

## 36K R32 Ducted Air Handler & 36K Top Discharge AC-Cooling Only Condenser

Location:	Approval:
Engineer:	Date:
Submitted to:	Construction:
Submitted by:	Unit #:
Reference:	Drawing #:

System Product Code: 81017555317  
Indoor Unit Product Code: 81017555249  
Outdoor Unit Product Code: 81017555412



### INDOOR UNIT SPECIFICATIONS

Indoor Throttle	Type	Piston
Indoor Fan Airflow (Hi/Lo)	CFM	1100 / 600
Indoor Noise Level (Hi/Lo)	dB(A)	50.0 / 42.5
Indoor Fan Motor Output	W	420
Fan Motor Rated Load Amps (RLA)	A	2.23
Unit Dimensions (WxDxH)	in	21.02 x 21.02 x 49.02
	mm	534 x 534 x 1245
Packing Dimensions (WxDxH)	inch	24.41 x 26.57 x 50.20
	mm	620 x 675 x 1275
Net Weight	lbs	128.5
	kg	58.3
Gross Weight	lbs	142.6
	kg	64.7

### OUTDOOR UNIT SPECIFICATIONS

Outdoor Throttle	Type	Capillary
Outdoor Fan Airflow (Max.)	CFM	2650
Outdoor Noise Level	dB(A)	59
Compressor	Type	Rotary
Compressor Capacity	W	10445
Compressor Input Power	W	2385
Compressor Rated Load Amps (RLA)	A	11.65
Compressor Refrigerant Oil	Type	VG74
Compressor Refrigerant Oil Volume	ml	740
Outdoor Fan Motor Output	W	200
Fan Motor Rated Load Amps (RLA)	A	2.3
Unit Dimensions (WxDxH)	in	29.13 x 29.13 x 25.00
	mm	740 x 740 x 635
Packing Dimensions (WxDxH)	in	30.32 x 30.32 x 26.18
	mm	770 x 770 x 665
Net Weight	lbs	145
	kg	65.9
Gross Weight	lbs	154
	kg	70.0

### EFFICIENCY RATINGS

Cooling	
SEER2	14.30
EER2	11.70

### COOLING PERFORMANCE & OPERATING TEMPERATURE

Cooling (Btu/hr)		
Rated Cooling Capacity*	34200	
Cooling Capacity at 109°F (43°C)	31500	
*Rated Cooling Conditions:	Indoor: 80°F DB/67°F WB Outdoor: 95°F DB/75°F WB	
Ambient Temperature Range (Cooling Operation)		
Indoor Unit	°F	60°F ~ 90°F
	°C	16°C ~ 32°C
Outdoor Unit	°F	5°F ~ 131°F
	°C	-15°C ~ 55°C

### ELECTRICAL SPECIFICATIONS

Outdoor Unit Power Supply	V, Ph, Hz	208/230V, 60Hz, 1 Ph
Indoor Unit Power Supply	V, Ph, Hz	208/230V, 60Hz, 1 Ph
Communication Wiring	Type	AWG 25x3 Shielded
ODU Minimum Circuit Ampacity (MCA)	A	24.0
ODU Max. Overcurrent Protection (Max Fuse or Breaker)	A	30
System Power Input (W)	W	2923
Rated Current (A)	A	13.40

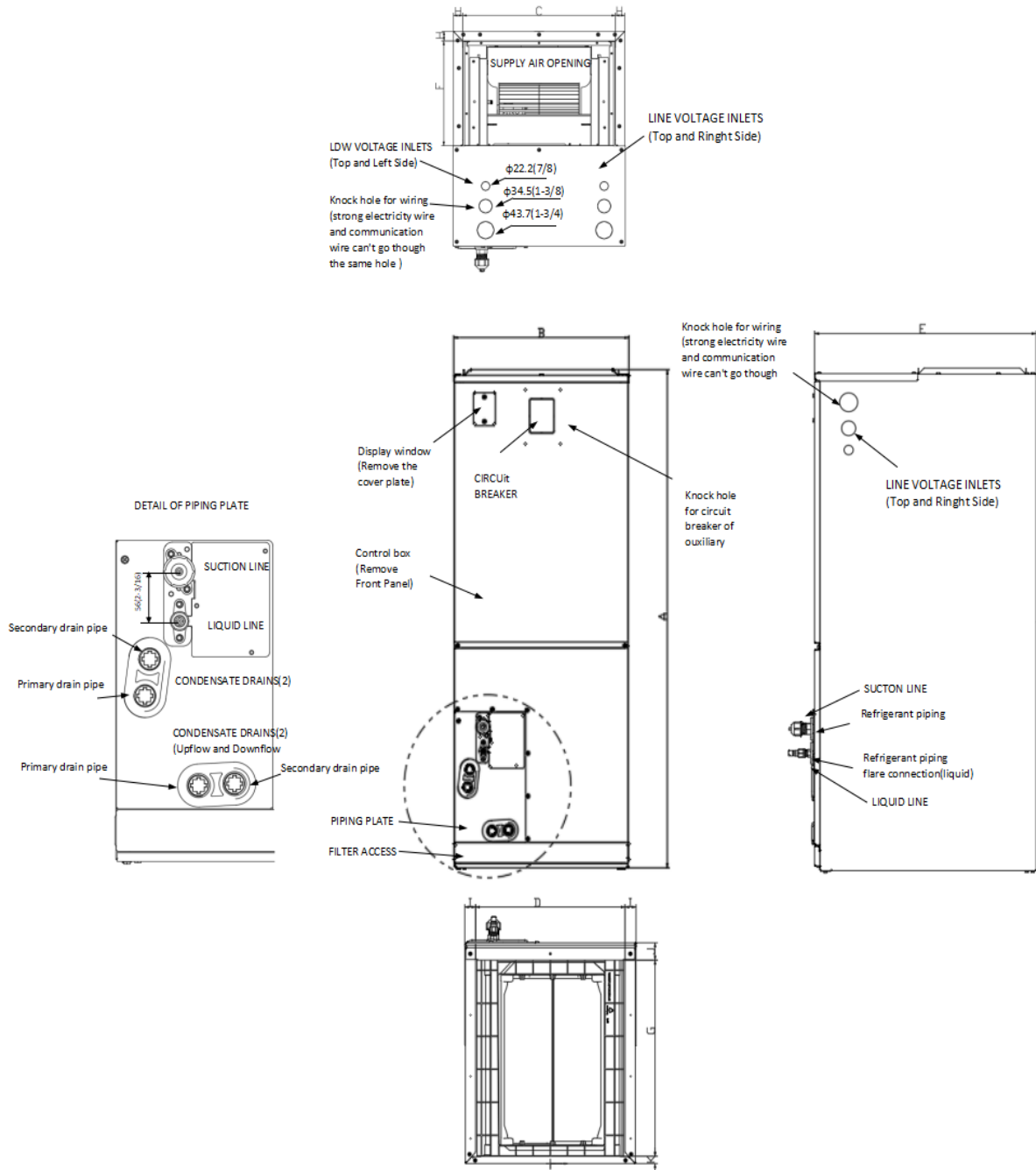
### REFRIGERANT PIPING SPECIFICATIONS

Refrigerant	Type	R32
Refrigerant Charge Amount (Outdoor unit pre-charged)	oz	79
	kg	2.25
Additional Charge of Refrigerant	oz/ft	0.52
	g/m	48
N.A. Design Pressure	psi	609 / 174
Liquid Side	in	3/8"
	mm	9.52
Gas Side	in	3/4"
	mm	19
Max. Piping Length	ft	131
	m	40
Max. Height Difference	ft	82
	m	25
Max. Pre-Charged Piping Length	ft	24.6
	m	7.5
Connection Method	Type	Flared

### Features

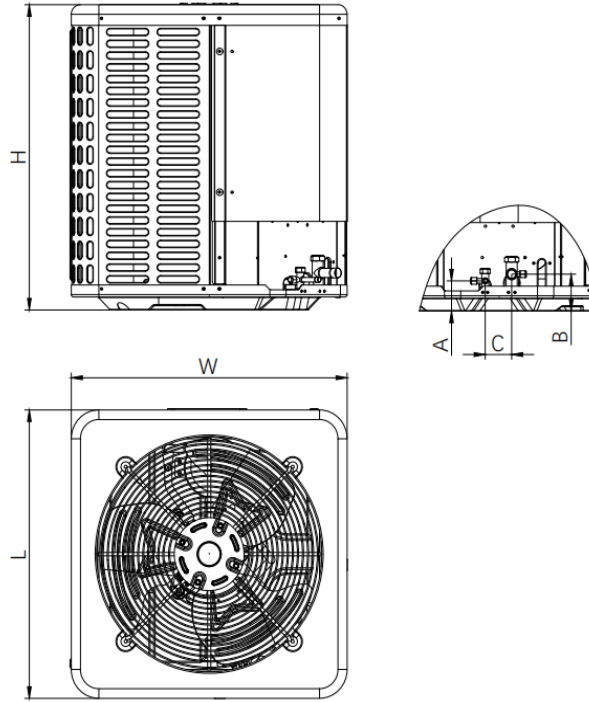
- Multi-position installation: horizontal (left or right), vertical (up or down)
- ECM fan motor with constant torque technology
- External static pressure up to 0.80 In.W.G
- 1 inch R4.2 fiberglass free insulation reduces condensation and boosts efficiency (optional)
- Optional Auxiliary heat kit up to 20kW
- Easy Maintenance
- Multiple control options available:
  - Wired controller with built-in WiFi
  - Third-Party 24V Thermostat
- Adaptive Control System

## Indoor Unit Dimensions



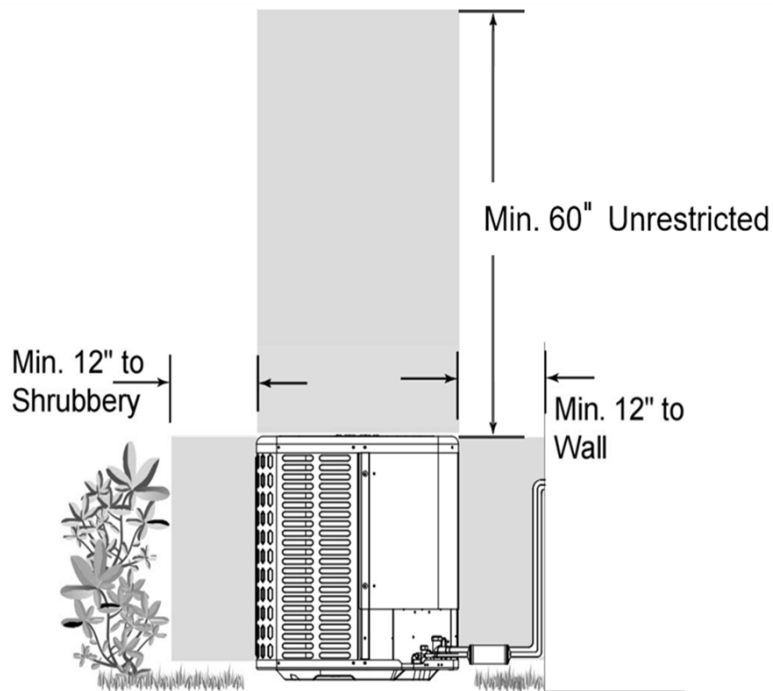
Dimensions		Model		18K/24K		30K/36K		48K/60K	
		inch	mm	inch	mm	inch	mm		
A	Model Height	45-3/4	1162	49-49/64	1264	53-47/64	1365		
B	Model width	17-41/64	448	21-9/64	537	24-39/64	625		
C	Supply Air Opening width	15-5/8	397	19-9/64	486	22-19/32	574		
D	Return Air Opening Width	15-25/64	391	18-47/64	476	22-23/64	568		
E	Model Depth	21-7/64	536	21-7/64	536	21-7/64	536		
F	Supply Air Opening Depth	10-9/32	261	10-9/32	261	10-9/32	261		
G	Return Air Opening Depth	18-23/32	475.5	18-23/32	475.5	18-23/32	475.5		
H	Supply Air Opening Clearance	15/16	24	15/16	24	15/16	24		
I	Return Air Opening Side Clearance	1-1/8	28.5	1-1/8	28.5	1-1/8	28.5		
J	Return Air Opening Front Clearance	1-21/32	42	1-21/32	42	1-21/32	42		
K	Return Air Opening Back Clearance	45/64	18	45/64	18	45/64	18		

### Outdoor Unit Dimension



Dimensions		Model		18K/24K		30K/36K		42K/48K/60K	
		inch	mm	inch	mm	inch	mm		
W	Model width	23-5/8	600	29-9/64	740	29-9/64	740	29-9/64	740
L	Model length	23-5/8	600	29-9/64	740	29-9/64	740	29-9/64	740
H	Model height	25	635	25	635	32-7/8	835		
A	Liquid side valve height	2-31/64	63	2-31/64	63	2-31/64	63		
B	Distance between two valves	3-1/32	77	3-1/32	77	3-1/32	77		
C	Gas side valve height	2-9/32	58	2-9/32	58	2-9/32	58		

### Outdoor Unit Installation Instructions & Clearance Requirements



Indoor Unit Fan Performance

