

# Submittal Data Sheet

Indoor Unit Model#: AC-I-24AH14  
Outdoor Unit Model#: AC-I-24AC14

## 24K R32 Ducted Air Handler & 24K Top Discharge AC-Cooling Only Condenser

Location:	Approval:
Engineer:	Date:
Submitted to:	Construction:
Submitted by:	Unit #:
Reference:	Drawing #:

System Product Code: 81017555294  
Indoor Unit Product Code: 81017555225  
Outdoor Unit Product Code: 810175554099



### INDOOR UNIT SPECIFICATIONS

Indoor Throttle	Type	Piston
Indoor Fan Airflow (Hi/Lo)	CFM	850 / 680
Indoor Noise Level (Hi/Lo)	dB(A)	42.0 / 38.0
Indoor Fan Motor Output	W	180
Fan Motor Rated Load Amps (RLA)	A	1.78
Unit Dimensions (W×D×H)	in	17.52 x 21.02 x 45.00
	mm	445 x 534 x 1143
Packing Dimensions (W×D×H)	inch	20.87 x 26.57 x 46.26
	mm	530 x 675 x 1175
Net Weight	lbs	106.7
	kg	48.4
Gross Weight	lbs	117.7
	kg	53.4

### OUTDOOR UNIT SPECIFICATIONS

Outdoor Throttle	Type	Capillary
Outdoor Fan Airflow (Max.)	CFM	2000
Outdoor Noise Level	dB(A)	58
Compressor	Type	Rotary
Compressor Capacity	W	7530
Compressor Input Power	W	1710
Compressor Rated Load Amps (RLA)	A	8.35
Compressor Refrigerant Oil	Type	VG74
Compressor Refrigerant Oil Volume	ml	640
Outdoor Fan Motor Output	W	200
Fan Motor Rated Load Amps (RLA)	A	2.3
Unit Dimensions (W×D×H)	in	23.62 x 23.62 x 25.00
	mm	600 x 600 x 635
Packing Dimensions (W×D×H)	in	25.98 x 25.98 x 26.18
	mm	660 x 660 x 665
Net Weight	lbs	119
	kg	54.0
Gross Weight	lbs	126
	kg	57.0

### EFFICIENCY RATINGS

Cooling	
SEER2	14.30
EER2	11.70

### COOLING PERFORMANCE & OPERATING TEMPERATURE

Cooling (Btu/hr)		
Rated Cooling Capacity*	24000	
Cooling Capacity at 109°F (43°C)	22000	
*Rated Cooling Conditions:	Indoor: 80°F DB/67°F WB Outdoor: 95°F DB/75°F WB	
Ambient Temperature Range (Cooling Operation)		
Indoor Unit	°F	60°F ~ 90°F
	°C	16°C ~ 32°C
Outdoor Unit	°F	5°F ~ 131°F
	°C	-15°C ~ 55°C

### ELECTRICAL SPECIFICATIONS

Outdoor Unit Power Supply	V, Ph, Hz	208/230V, 60Hz, 1 Ph
Indoor Unit Power Supply	V, Ph, Hz	208/230V, 60Hz, 1 Ph
Communication Wiring	Type	AWG 25x3 Shielded
ODU Minimum Circuit Ampacity (MCA)	A	13.0
ODU Max. Overcurrent Protection (Max Fuse or Breaker)	A	15
System Power Input (W)	W	2051
Rated Current (A)	A	9.40

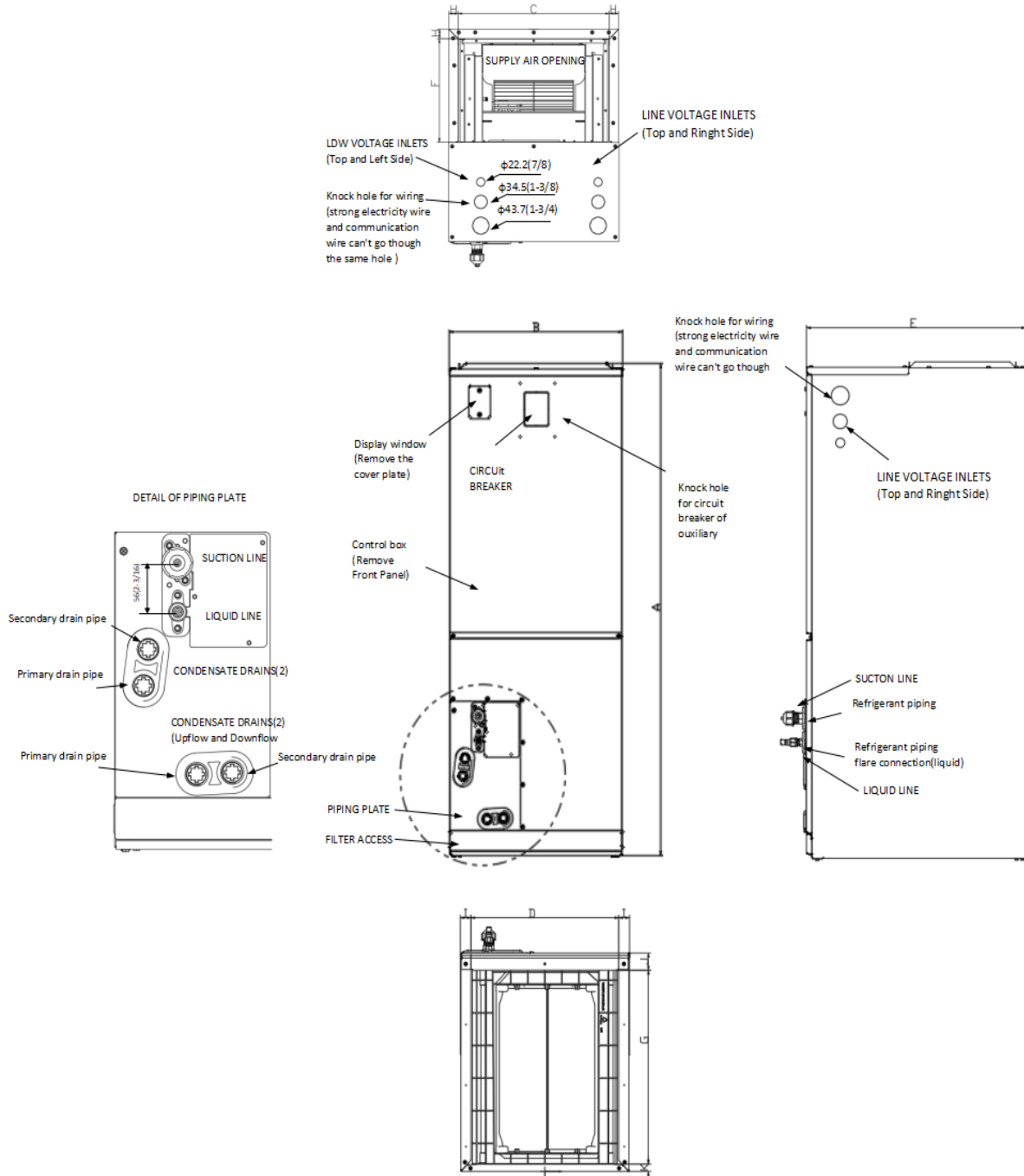
### REFRIGERANT PIPING SPECIFICATIONS

Refrigerant	Type	R32
Refrigerant Charge Amount (Outdoor unit pre-charged)	oz	53
	kg	1.5
Additional Charge of Refrigerant	oz/ft	0.52
	g/m	48
N.A. Design Pressure	psi	609 / 174
Liquid Side	in	3/8"
	mm	9.52
Gas Side	in	3/4"
	mm	19
Max. Piping Length	ft	131
	m	40
Max. Height Difference	ft	65.6
	m	20
Max. Pre-Charged Piping Length	ft	24.6
	m	7.5
Connection Method	Type	Flared

### Features

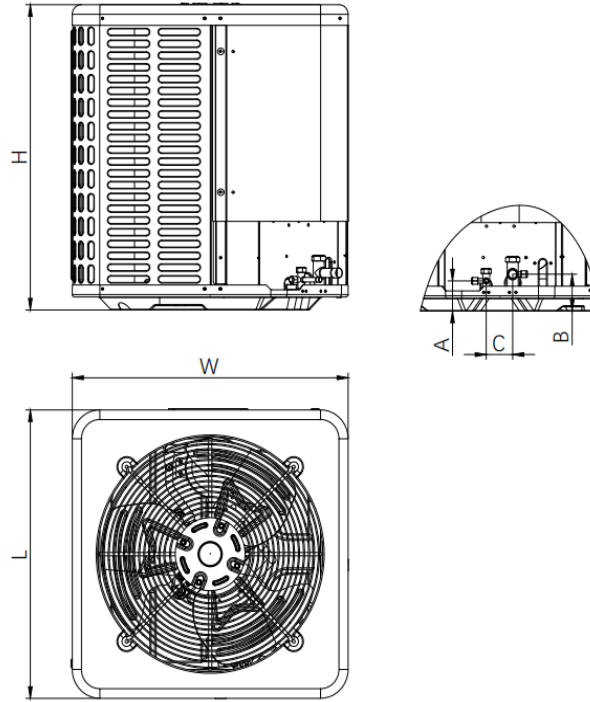
- Multi-position installation: horizontal (left or right), vertical (up or down)
- ECM fan motor with constant torque technology
- External static pressure up to 0.80 In.W.G
- 1 inch R4.2 fiberglass free insulation reduces condensation and boosts efficiency (optional)
- Optional Auxiliary heat kit up to 20kW
- Easy Maintenance
- Multiple control options available:
  - Wired controller with built-in WiFi
  - Third-Party 24V Thermostat
- Adaptive Control System

## Indoor Unit Dimensions



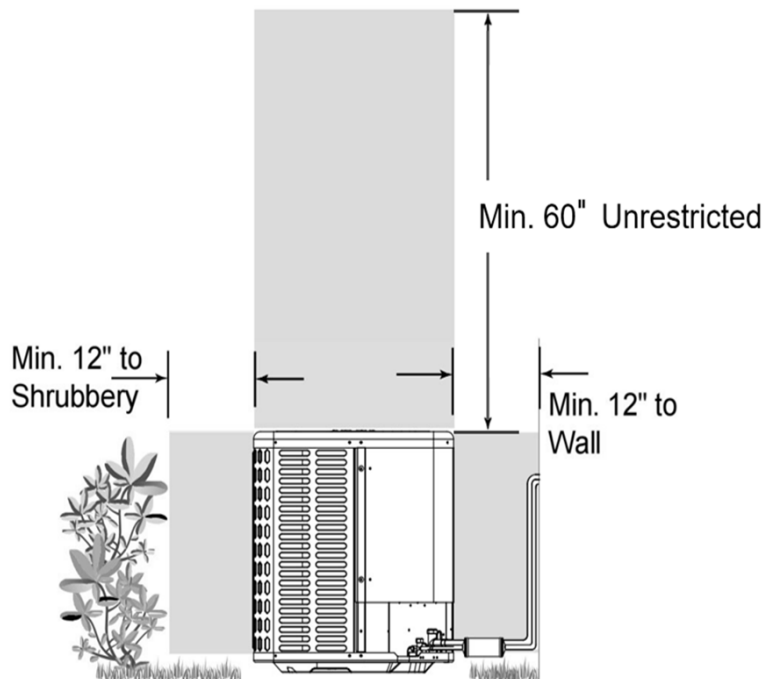
Dimensions		Model	18K/24K		30K/36K		48K/60K	
			inch	mm	inch	mm	inch	mm
A	Model Height		45-3/4	1162	49-49/64	1264	53-47/64	1365
B	Model width		17-41/64	448	21-9/64	537	24-39/64	625
C	Supply Air Opening width		15-5/8	397	19-9/64	486	22-19/32	574
D	Return Air Opening Width		15-25/64	391	18-47/64	476	22-23/64	568
E	Model Depth		21-7/64	536	21-7/64	536	21-7/64	536
F	Supply Air Opening Depth		10-9/32	261	10-9/32	261	10-9/32	261
G	Return Air Opening Depth		18-23/32	475.5	18-23/32	475.5	18-23/32	475.5
H	Supply Air Opening Clearance		15/16	24	15/16	24	15/16	24
I	Return Air Opening Side Clearance		1-1/8	28.5	1-1/8	28.5	1-1/8	28.5
J	Return Air Opening Front Clearance		1-21/32	42	1-21/32	42	1-21/32	42
K	Return Air Opening Back Clearance		45/64	18	45/64	18	45/64	18

### Outdoor Unit Dimension



Dimensions		18K/24K		30K/36K		42K/48K/60K	
		inch	mm	inch	mm	inch	mm
W	Model width	23-5/8	600	29-9/64	740	29-9/64	740
L	Model length	23-5/8	600	29-9/64	740	29-9/64	740
H	Model height	25	635	25	635	32-7/8	835
A	Liquid side valve height	2-31/64	63	2-31/64	63	2-31/64	63
B	Distance between two valves	3-1/32	77	3-1/32	77	3-1/32	77
C	Gas side valve height	2-9/32	58	2-9/32	58	2-9/32	58

### Outdoor Unit Installation Instructions & Clearance Requirements



Indoor Unit Fan Performance

