

Submittal Data Sheet

Indoor Unit Model#: AC-I-18AH14
Outdoor Unit Model#: AC-I-18AC14

18K R32 Ducted Air Handler & 18K Top Discharge AC-Cooling Only Condenser

| | |
|---------------|---------------|
| Location: | Approval: |
| Engineer: | Date: |
| Submitted to: | Construction: |
| Submitted by: | Unit #: |
| Reference: | Drawing #: |

System Product Code: 81017555287
Indoor Unit Product Code: 81017555218
Outdoor Unit Product Code: 810175554082



INDOOR UNIT SPECIFICATIONS

| Parameter | Type | Value |
|---------------------------------|-------|-----------------------|
| Indoor Throttle | Type | Piston |
| Indoor Fan Airflow (Hi/Lo) | CFM | 680 / 400 |
| Indoor Noise Level (Hi/Lo) | dB(A) | 38.5 / 34.0 |
| Indoor Fan Motor Output | W | 180 |
| Fan Motor Rated Load Amps (RLA) | A | 1.29 |
| Unit Dimensions (WxDxH) | in | 17.52 x 21.02 x 45.00 |
| | mm | 445 x 534 x 1143 |
| Packing Dimensions (WxDxH) | inch | 20.87 x 26.57 x 46.26 |
| | mm | 530 x 675 x 1175 |
| Net Weight | lbs | 106.7 |
| | kg | 48.4 |
| Gross Weight | lbs | 117.7 |
| | kg | 53.4 |

OUTDOOR UNIT SPECIFICATIONS

| Parameter | Type | Value |
|-----------------------------------|-------|-----------------------|
| Outdoor Throttle | Type | Capillary |
| Outdoor Fan Airflow (Max.) | CFM | 2000 |
| Outdoor Noise Level | dB(A) | 58 |
| Compressor | Type | Rotary |
| Compressor Capacity | W | 5760 |
| Compressor Input Power | W | 1315 |
| Compressor Rated Load Amps (RLA) | A | 6.45 |
| Compressor Refrigerant Oil | Type | VG74 |
| Compressor Refrigerant Oil Volume | ml | 255 |
| Outdoor Fan Motor Output | W | 200 |
| Fan Motor Rated Load Amps (RLA) | A | 2.3 |
| Unit Dimensions (WxDxH) | in | 23.62 x 23.62 x 25.00 |
| | mm | 600 x 600 x 635 |
| Packing Dimensions (WxDxH) | in | 25.98 x 25.98 x 26.18 |
| | mm | 660 x 660 x 665 |
| Net Weight | lbs | 117 |
| | kg | 53.0 |
| Gross Weight | lbs | 123 |
| | kg | 56.0 |

EFFICIENCY RATINGS

| Cooling | |
|---------|-------|
| SEER2 | 14.30 |
| EER2 | 11.70 |

COOLING PERFORMANCE & OPERATING TEMPERATURE

| Cooling (Btu/hr) | | |
|---|---|--------------|
| Rated Cooling Capacity* | 18000 | |
| Cooling Capacity at 109°F (43°C) | 16500 | |
| *Rated Cooling Conditions: | Indoor: 80°F DB/67°F WB Outdoor: 95°F DB/75°F WB | |
| Ambient Temperature Range (Cooling Operation) | | |
| Indoor Unit | °F | 60°F ~ 90°F |
| | °C | 16°C ~ 32°C |
| Outdoor Unit | °F | 5°F ~ 131°F |
| | °C | -15°C ~ 55°C |

ELECTRICAL SPECIFICATIONS

| Parameter | V, Ph, Hz | Value |
|---|-----------|----------------------|
| Outdoor Unit Power Supply | V, Ph, Hz | 208/230V, 60Hz, 1 Ph |
| Indoor Unit Power Supply | V, Ph, Hz | 208/230V, 60Hz, 1 Ph |
| Communication Wiring | Type | AWG 25x3 Shielded |
| ODU Minimum Circuit Ampacity (MCA) | A | 11.0 |
| ODU Max. Overcurrent Protection (Max Fuse or Breaker) | A | 15 |
| System Power Input (W) | W | 1538 |
| Rated Current (A) | A | 7.00 |

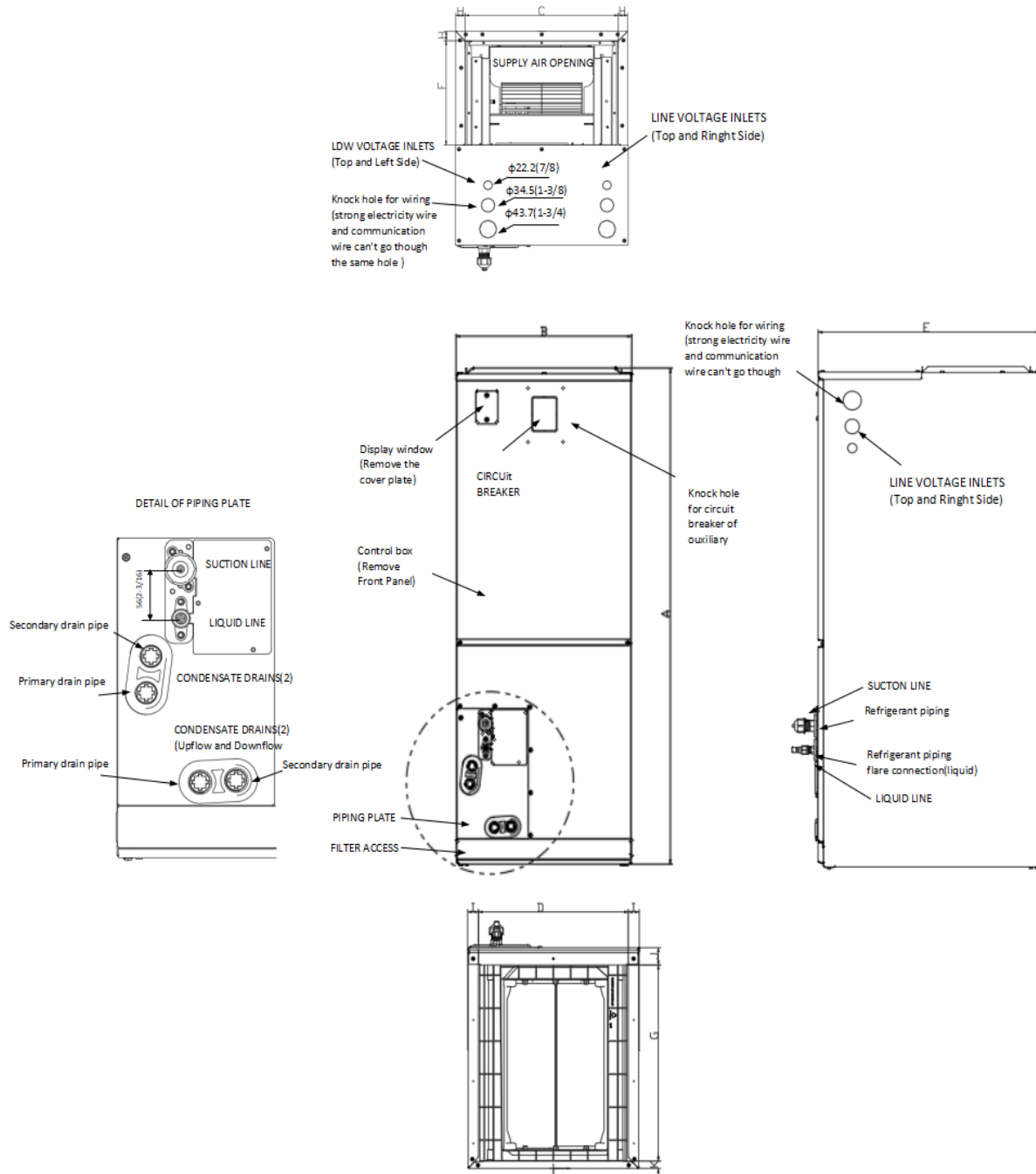
REFRIGERANT PIPING SPECIFICATIONS

| Parameter | Type | Value |
|--|-------|-----------|
| Refrigerant | Type | R32 |
| Refrigerant Charge Amount (Outdoor unit pre-charged) | oz | 46 |
| | kg | 1.3 |
| Additional Charge of Refrigerant | oz/ft | 0.52 |
| | g/m | 48 |
| N.A. Design Pressure | psi | 609 / 174 |
| Liquid Side | in | 3/8" |
| | mm | 9.52 |
| Gas Side | in | 3/4" |
| | mm | 19 |
| Max. Piping Length | ft | 98 |
| | m | 30 |
| Max. Height Difference | ft | 65.6 |
| | m | 20 |
| Max. Pre-Charged Piping Length | ft | 24.6 |
| | m | 7.5 |
| Connection Method | Type | Flared |

Features

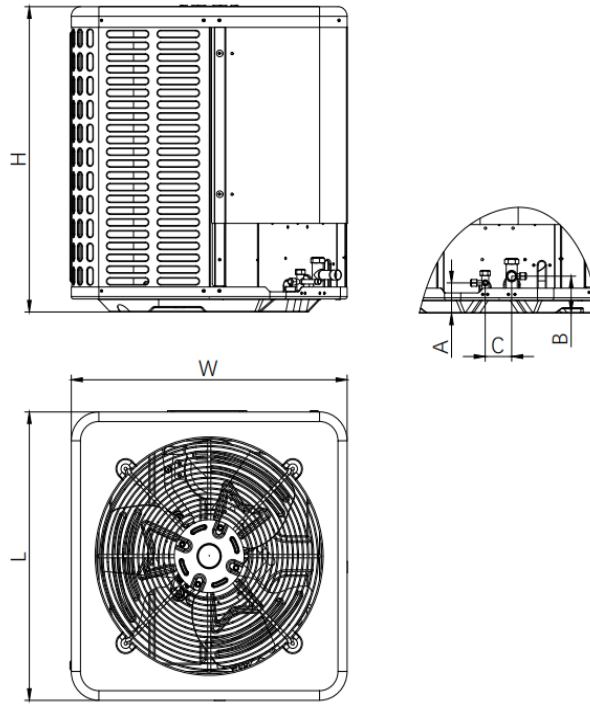
- Multi-position installation: horizontal (left or right), vertical (up or down)
- ECM fan motor with constant torque technology
- External static pressure up to 0.80 In.W.G
- 1 inch R4.2 fiberglass free insulation reduces condensation and boosts efficiency (optional)
- Optional Auxiliary heat kit up to 20kW
- Easy Maintenance
- Multiple control options available:
 - Wired controller with built-in WiFi
 - Third-Party 24V Thermostat
- Adaptive Control System

Indoor Unit Dimensions



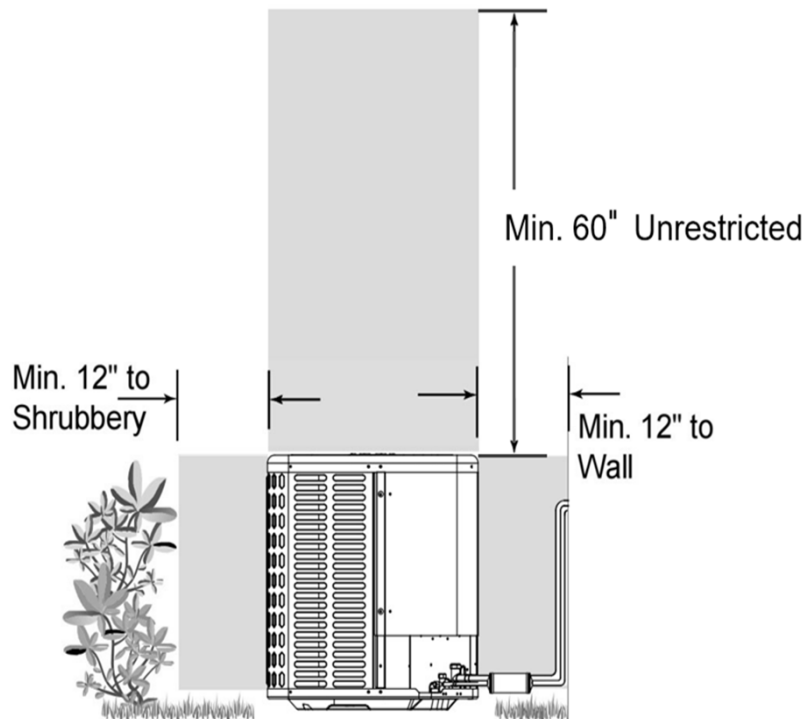
| Dimensions | | Model | 18K/24K | | 30K/36K | | 48K/60K | |
|------------|------------------------------------|-------|----------|-------|----------|-------|----------|-------|
| | | | inch | mm | inch | mm | inch | mm |
| A | Model Height | | 45-3/4 | 1162 | 49-49/64 | 1264 | 53-47/64 | 1365 |
| B | Model width | | 17-41/64 | 448 | 21-9/64 | 537 | 24-39/64 | 625 |
| C | Supply Air Opening width | | 15-5/8 | 397 | 19-9/64 | 486 | 22-19/32 | 574 |
| D | Return Air Opening Width | | 15-25/64 | 391 | 18-47/64 | 476 | 22-23/64 | 568 |
| E | Model Depth | | 21-7/64 | 536 | 21-7/64 | 536 | 21-7/64 | 536 |
| F | Supply Air Opening Depth | | 10-9/32 | 261 | 10-9/32 | 261 | 10-9/32 | 261 |
| G | Return Air Opening Depth | | 18-23/32 | 475.5 | 18-23/32 | 475.5 | 18-23/32 | 475.5 |
| H | Supply Air Opening Clearance | | 15/16 | 24 | 15/16 | 24 | 15/16 | 24 |
| I | Return Air Opening Side Clearance | | 1-1/8 | 28.5 | 1-1/8 | 28.5 | 1-1/8 | 28.5 |
| J | Return Air Opening Front Clearance | | 1-21/32 | 42 | 1-21/32 | 42 | 1-21/32 | 42 |
| K | Return Air Opening Back Clearance | | 45/64 | 18 | 45/64 | 18 | 45/64 | 18 |

Outdoor Unit Dimension



| Dimensions \ Model | | 18K/24K | | 30K/36K | | 42K/48K/60K | |
|--------------------|-----------------------------|---------|-----|---------|-----|-------------|-----|
| | | inch | mm | inch | mm | inch | mm |
| W | Model width | 23-5/8 | 600 | 29-9/64 | 740 | 29-9/64 | 740 |
| L | Model length | 23-5/8 | 600 | 29-9/64 | 740 | 29-9/64 | 740 |
| H | Model height | 25 | 635 | 25 | 635 | 32-7/8 | 835 |
| A | Liquid side valve height | 2-31/64 | 63 | 2-31/64 | 63 | 2-31/64 | 63 |
| B | Distance between two valves | 3-1/32 | 77 | 3-1/32 | 77 | 3-1/32 | 77 |
| C | Gas side valve height | 2-9/32 | 58 | 2-9/32 | 58 | 2-9/32 | 58 |

Outdoor Unit Installation Instructions & Clearance Requirements



Indoor Unit Fan Performance

