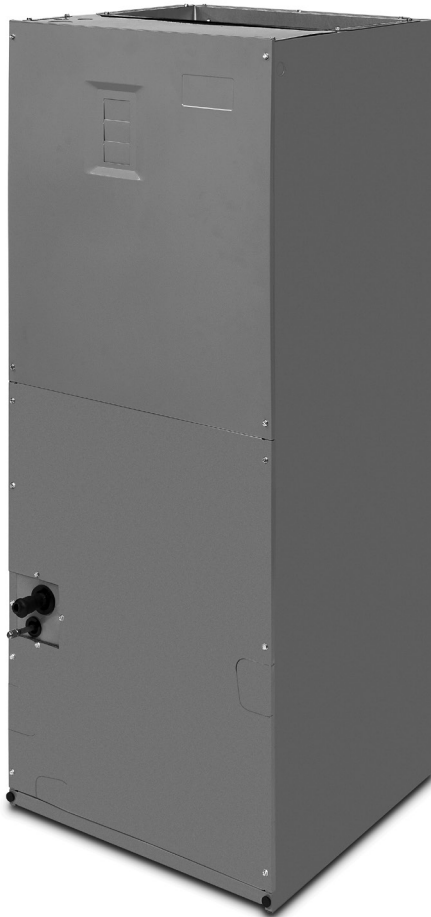


## TECHNICAL SPECIFICATIONS

# B64EMMX Series

### Air Handlers with TXV and ECM blowers for SEER2 Residential System 18,000 - 48,000 Btuh (Heat Pump & Air Conditioner)

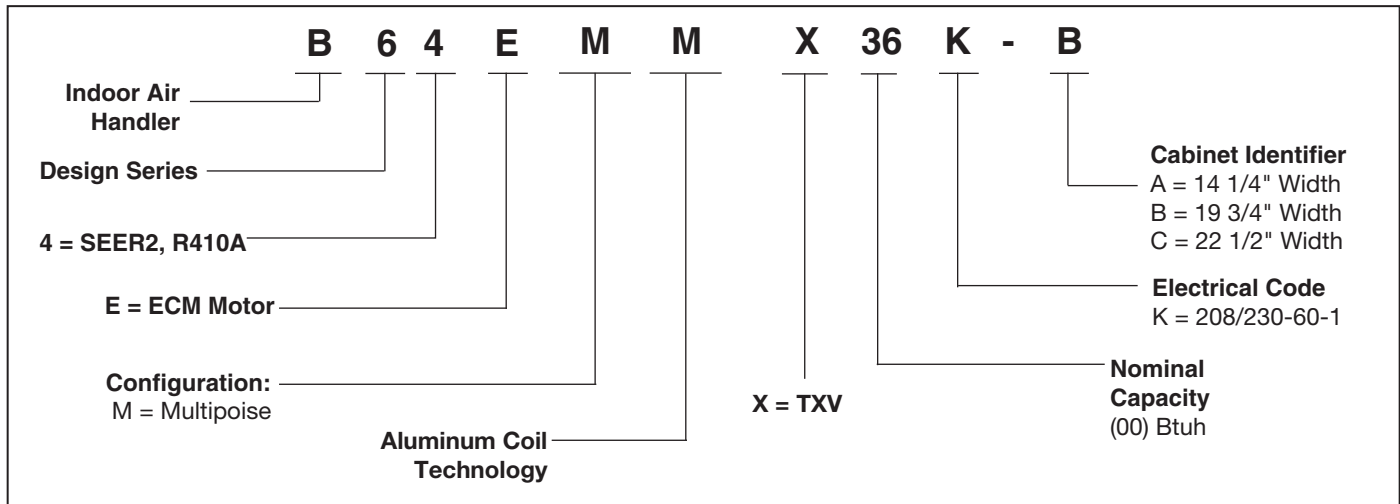
The B64EMMX Series of air handlers, when combined with our heat pump or air conditioner, offers a full line of quality, split system heating and cooling equipment.



## FEATURES and BENEFITS

- **Energy Efficient Fixed Speed ECM Motor:** Provides 16 field-selectable cooling airflows and 16 field-selectable heating airflows to match any application.
- **Quiet Blower Operation:** Extra quiet and smooth blower on and off cycles.
- **Reduced air stratification:** This results in improved air quality by optimizing humidity removal and filtration capabilities.
- **Multi-poised:** Can be used in horizontal, upflow, downflow and vertical applications.
- **Built in Filter Rack:** makes the air handler easy to service.
- **Plug-in Heater Kit:** Available in 5 kw through 24 kw.
- **Circuit Board:** Incorporating blower time delay relay, low voltage terminal strip, and heat-strip sequencing.
- **Breaker Accessibility:** Breaker accessible from the front of the unit when heater is applied.
- **Plastic Drain Pan:** Provides corrosion resistance.
- **Durable Cabinet:** Galvanized steel with a polyurethane finish. The finish will endure 950 hours of salt spray and resist corrosion 50% better than comparable units.
- **Designed to meet the requirements 610.2.A.2:** Meets Florida building code requirements for air leakage.
- **Thermal Expansion Valve:** Factory installed externally equalized thermal expansion valve provides precise refrigerant control under varying load conditions.
- **Cabinet Insulation:** 1" insulation with an R-value of 4.2 contributes to quiet operation and prevents cabinet sweating in difficult applications.
- **Aluminum Coil Technology:** All aluminum coil provides high corrosion resistance.

## MODEL IDENTIFICATION CODE



## SPECIFICATIONS

Model B64EMMX	24K-A	30K-A	24K-B	30K-B	36K-B	42K-B	48K-C
Refrigerant Flow Control	TXV	TXV	TXV	TXV	TXV	TXV	TXV
Maximum Available Auxiliary Heat (kw)	10	10 <sup>1</sup>	15	10	15	15 <sup>2</sup>	25
Motor HP	1/2	1/2	1/2	1/2	1/2	1/2	1
Approximate Shipping Weight (lbs.)	99	98	109.5	111	121	120	145

### NOTES:

1. 10kW horizontal requires limit change
2. Downflow max heater kit size is 10kW

Alternate limits included with heater kit

See current AHRI Directory for certified combinations and ratings. [www.ahridirectory.org](http://www.ahridirectory.org)

## MINIMUM HEATING AIRFLOW SETTINGS (in CFM)

Cabinet	Nominal Electric Heat KW					
	5	8	10	15	20	25
A	800	900	1000	1300	N/A	N/A
B	900	1000	1100	1300	1500	N/A
C	1000	1100	1200	1400	1600	1800

# ACCESSORIES

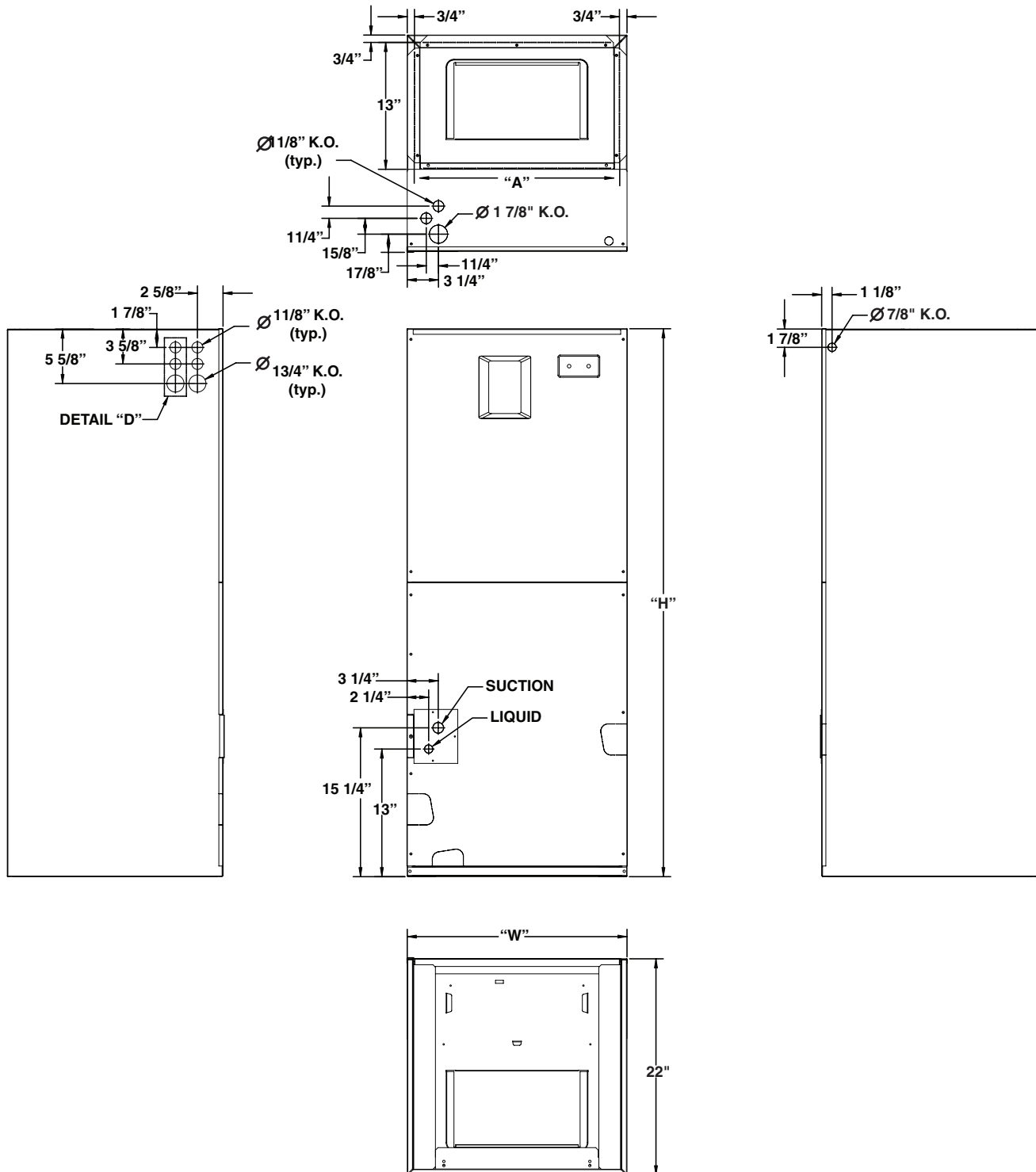
Accessory Kit Description	Cabinet Size			Order Number
	A	B	C	
Down-flow adaptor kit	X			917342
		X		919321
			X	919322
Single circuit adaptor for 2 circuit breakers	X	X	X	913874
Baffle Drip Guard 3"		X		922125
Baffle Drip Guard 4"			X	922126

## 240V Single-Phase Heater Kit Application

Nominal KW	Matched Units							Order Number	
	*24K-A	*30K-A	*24K-B	*30K-B	*36K-B	*42K-B	*48K-C	With Circuit Breakers	Without Circuit Breakers
5	X	X	X	X	X	X	X	922521A	922520A
8	X	X	X	X	X	X	X	922523A	922522A
10	X	X	X	X	X	X	X	922526A	922525A
15	n/a	n/a	X	n/a	X	X	X	922527A	n/a
20	n/a	n/a	n/a	n/a	n/a	n/a	X	922529A	n/a
25	n/a	n/a	n/a	n/a	n/a	n/a	X	922530A	n/a

# DIMENSIONS

Models B64EMMX	Height	Width	Refrigerant Connections		Filter Size	Supply Air Duct Dimensions
			Suction Diameter	Liquid Diameter		
24K-A	43 1/2	14 1/4	3/4	3/8	12 x 20 x 1	12 7/8 x 12 3/4
24K-B	43 1/2	19 3/4	3/4	3/8	18 x 20 x 1	12 7/8 x 18 1/4
30K-A	43 1/2	14 1/4	3/4	3/8	12 x 20 x 1	12 7/8 x 12 3/4
30K-B	43 1/2	19 3/4	3/4	3/8	18 x 20 x 1	12 7/8 x 18 1/4
36K-B	49 1/2	19 3/4	7/8	3/8	18 x 20 x 1	12 7/8 x 18 1/4
42K-B	49 1/2	19 3/4	7/8	3/8	18 x 20 x 1	12 7/8 x 18 1/4
48K-C	56	22 1/2	7/8	3/8	20 x 20 x 1	12 7/8 x 21



# ELECTRICAL DATA

Cabinet	Tons	Model Number H8HK-	Voltage 240								Voltage 208							
			Minimum Circuit Ampacity				Maximum Over-current Rating				Minimum Circuit Ampacity				Maximum Over-current Rating			
			Circuit A	Circuit B	Circuit C	Single Circuit	Circuit A	Circuit B	Circuit C	Single Circuit	Circuit A	Circuit B	Circuit C	Single Circuit	Circuit A	Circuit B	Circuit C	Single Circuit
A	24	None	4.8	-	-	4.8	15	-	-	15	4.8	-	-	4.8	15	-	-	15
		005H-XX	29.8	-	-	29.8	30	-	-	30	26.4	-	-	26.4	30	-	-	30
		008H-XX	44.3	-	-	44.3	45	-	-	45	39.0	-	-	39.0	40	-	-	40
		010H-XX	54.8	-	-	54.8	60	-	-	60	48.0	-	-	48.0	50	-	-	50
B	24	None	4.8	-	-	4.8	15	-	-	15	4.8	-	-	4.8	15	-	-	15
		005H-XX	29.8	-	-	29.8	30	-	-	30	26.4	-	-	26.4	30	-	-	30
		008H-XX	44.3	-	-	44.3	45	-	-	45	39.0	-	-	39.0	40	-	-	40
		010H-XX	54.8	-	-	54.8	60	-	-	60	48.0	-	-	48.0	50	-	-	50
		015H-XX	50.0	29.8	-	79.8	50	30	-	80	43.3	26.4	-	69.7	45	30	-	70
A	30	None	4.8	-	-	4.8	15	-	-	15	4.8	-	-	4.8	15	-	-	15
		005H-XX	29.8	-	-	29.8	30	-	-	30	26.4	-	-	26.4	30	-	-	30
		008H-XX	44.3	-	-	44.3	45	-	-	45	39.0	-	-	39.0	40	-	-	40
		010H-XX	54.8	-	-	54.8	60	-	-	60	48.0	-	-	48.0	50	-	-	50
B	30	None	4.8	-	-	4.8	15	-	-	15	4.8	-	-	4.8	15	-	-	15
		005H-XX	29.8	-	-	29.8	30	-	-	30	26.4	-	-	26.4	30	-	-	30
		008H-XX	44.3	-	-	44.3	45	-	-	45	39.0	-	-	39.0	40	-	-	40
		010H-XX	54.8	-	-	54.8	60	-	-	60	48.0	-	-	48.0	50	-	-	50
B	36	None	4.8	-	-	4.8	15	-	-	15	4.8	-	-	4.8	15	-	-	15
		005H-XX	29.8	-	-	29.8	30	-	-	30	26.4	-	-	26.4	30	-	-	30
		008H-XX	44.3	-	-	44.3	45	-	-	45	39.0	-	-	39.0	40	-	-	40
		010H-XX	54.8	-	-	54.8	60	-	-	60	48.0	-	-	48.0	50	-	-	50
		015H-XX	50.0	29.8	-	79.8	50	30	-	80	43.3	26.4	-	69.7	45	30	-	70
B	42	None	4.8	-	-	4.8	15	-	-	15	4.8	-	-	4.8	15	-	-	15
		005H-XX	29.8	-	-	29.8	30	-	-	30	26.4	-	-	26.4	30	-	-	30
		008H-XX	44.3	-	-	44.3	45	-	-	45	39.0	-	-	39.0	40	-	-	40
		010H-XX	54.8	-	-	54.8	60	-	-	60	48.0	-	-	48.0	50	-	-	50
		015H-XX	50.0	29.8	-	79.8	50	30	-	80	43.3	26.4	-	69.7	45	30	-	70
C	48	None	8.8	-	-	8.8	15	-	-	15	8.8	-	-	8.8	15	-	-	15
		005H-XX	33.8	-	-	33.8	35	-	-	35	30.4	-	-	30.4	35	-	-	35
		008H-XX	48.3	-	-	48.3	50	-	-	50	43.0	-	-	43.0	45	-	-	45
		010H-XX	58.8	-	-	58.8	60	-	-	60	52.0	-	-	52.0	60	-	-	60
		015H-XX	50.0	33.8	-	83.8	50	35	-	90	43.3	30.4	-	73.7	45	35	-	80
		020H-XX	50.0	58.8	-	108.8	50	60	-	110	43.3	52.0	-	95.3	45	60	-	100
		025H-XX	50.0	50.0	33.8	133.8	50	50	35	150	43.3	43.3	30.4	116.9	45	45	35	125

# AIRFLOW DATA

	SWITCH SETTINGS 0 = OFF, 1 = ON				COOLING OR HEATING AIRFLOW (CFM)							
					DRY COIL ESP							
	1/5	2/6	3/7	4/8	0.1	0.2	0.3	0.4	0.5	0.6	0.7	0.8
<b>B64EM A-CABINET</b>	0	0	0	0	585	550	520	460	420	405	—	—
	1	0	0	0	710	670	650	610	560	530	475	440
	0	1	0	0	845	790	765	715	680	655	625	580
	1	1	0	0	890	865	840	785	760	710	680	655
	0	0	1	0	955	925	900	850	825	790	770	720
	1	0	1	0	1030	995	975	940	910	870	840	815
	0	1	1	0	1115	1085	1060	1020	995	965	925	905
	1	1	1	0	1155	1130	1095	1070	1040	1010	985	950
	0	0	0	1	1200	1175	1145	1110	1085	1060	1025	1000
	1	0	0	1	1240	1215	1195	1170	1140	1110	1080	1060
	0	1	0	1	1320	1290	1265	1240	1215	1185	1160	1130
	1	1	0	1	1355	1330	1305	1280	1255	1220	1200	1175
	0	0	1	1	1405	1375	1345	1325	1295	1275	1250	1210
	1	0	1	1	1440	1415	1385	1355	1325	1290	1255	1215
	0	1	1	1	1465	1425	1390	1355	1320	1290	1260	1215
	1	1	1	1	1465	1425	1390	1355	1320	1290	1260	1215
<b>B64EM B-CABINET</b>	0	0	0	0	600	550	430	390	—	—	—	—
	1	0	0	0	660	610	540	460	425	—	—	—
	0	1	0	0	830	750	695	640	580	520	—	—
	1	1	0	0	860	825	765	690	630	600	525	485
	0	0	1	0	935	895	835	790	710	655	620	585
	1	0	1	0	1045	975	920	875	830	795	720	685
	0	1	1	0	1095	1040	995	950	900	850	805	750
	1	1	1	0	1155	1105	1060	1010	965	920	870	825
	0	0	0	1	1230	1185	1140	1090	1045	1010	965	920
	1	0	0	1	1285	1260	1210	1165	1125	1080	1040	1010
	0	1	0	1	1330	1290	1245	1205	1170	1125	1085	1045
	1	1	0	1	1395	1365	1315	1275	1235	1205	1160	1130
	0	0	1	1	1450	1405	1375	1335	1295	1260	1220	1180
	1	0	1	1	1490	1450	1410	1385	1340	1300	1270	1230
	0	1	1	1	1530	1485	1460	1425	1380	1350	1310	1280
	1	1	1	1	1530	1490	1465	1425	1390	1350	1310	1285
<b>B64EM C-CABINET</b>	0	0	0	0	720	610	510	420	335	--	--	--
	1	0	0	0	880	780	685	595	505	425	--	--
	0	1	0	0	1035	940	850	765	690	620	560	--
	1	1	0	0	1130	1050	975	900	830	760	695	630
	0	0	1	0	1275	1195	1120	1050	985	920	865	815
	1	0	1	0	1365	1295	1230	1165	1100	1035	975	915
	0	1	1	0	1490	1425	1360	1300	1240	1185	1130	1075
	1	1	1	0	1580	1525	1465	1410	1355	1300	1245	1190
	0	0	0	1	1685	1630	1575	1520	1465	1410	1355	1300
	1	0	0	1	1750	1695	1640	1585	1535	1480	1430	1375
	0	1	0	1	1840	1785	1730	1680	1625	1575	1530	1480
	1	1	0	1	1895	1850	1800	1750	1700	1650	1595	1540
	0	0	1	1	1980	1930	1880	1830	1780	1735	1685	1640
	1	0	1	1	2045	1995	1945	1895	1845	1795	1750	1700
	0	1	1	1	2095	2045	1995	1945	1895	1845	1800	1755
	1	1	1	1	2170	2120	2070	2020	1970	1925	1875	1830

NOTE: 0 = OFF, 1 = ON

## AIRFLOW DATA continued

		Minimum Heating Airflows for Heater Kit Combination (CFM)								
Air Handler Model	Blower Orientation	H8HK005H-01A	H8HK005H-11A	H8HK008H-01A	H8HK008H-11A	H8HK010H-01A	H8HK010H-11A	H8HK015H-21A	H8HK020H-21A	H8HK024H-31A
		4.8 kW	4.8 kW	7.5 kW	7.5 kW	9.6 kW	9.6 kW	14.4 kW	19.2 kW	24.0 kW
B64EMMX 24K-A	Upflow & Horizontal Right/Left	765	765	1095	1095	1305	1305	-	-	-
	Downflow	765	765	1060	1060	1195	1195	-	-	-
B64EMMX 24K-B	Upflow/Downflow	540	540	835	835	995	995	1465	-	-
	Horizontal Right/Left	540	540	765	765	995	995	1315	-	-
B64EMMX 30K-A	Upflow/Downflow	765	765	1060	1060	1265	1265	-	-	-
	Horizontal Right/Left	650	650	975	975	1095	1095	-	-	-
B64EMMX 30K-B	Upflow/Downflow	695	695	920	920	1060	1060	-	-	-
	Horizontal Right/Left	765	765	1210	1210	1410	1410	-	-	-
B64EMMX 36K-B	ALL	540	540	835	835	1060	1060	1460	-	-
B64EMMX 42K-B	Upflow	695	695	920	920	1060	1060	1410	-	-
	Horizontal Right/Left	540	540	765	765	995	995	1315	-	-
	Downflow	695	695	920	920	1060	1060	-	-	-
B64EMMX 48K-C	ALL	510	510	850	850	975	975	1465	1800	1800

**Notes:**

Airflow values above are measured at 0.30 in W.C. of static pressure.

Dashes denote combinations that are not allowed.

All B64 Air Handlers have 2 blower housing limits installed (130F opening temperature), field-wired into the low voltage circuit of the H8HK\*A heater kit.

### Minimum Recommended Heating Blower Speeds for B64EMMX Air Handlers

# AIRFLOW DATA continued

		Limit Switch Opening Temperature(s) Required for Each Heater Kit Combination								
Air Handler Model	Blower Orientation	H8HK005H-01A	H8HK005H-11A	H8HK008H-01A	H8HK008H-11A	H8HK010H-01A	H8HK010H-11A	H8HK015H-21A	H8HK020H-21A	H8HK024H-31A
		4.8 kW	4.8 kW	7.5 kW	7.5 kW	9.6 kW	9.6 kW	14.4 kW	19.2 kW	24.0 kW
B64EMMX 24K-A	ALL	#1: 190F	#1: 190F	#1: 190F	#1: 190F	#1: 190F	#1: 190F	-	-	-
B64EMMX 24K-B	ALL	#1: 190F	#1: 190F	#1: 190F	#1: 190F	#1: 190F	#1: 190F	#1: 190F #2: 190F	-	-
B64EMMX 30K-A	Upflow/Downflow	#1: 190F	#1: 190F	#1: 190F	#1: 190F	#1: 190F	#1: 190F	-	-	-
	Horizontal Right/Left	#1: 190F	#1: 190F	#1: 190F	#1: 190F	#1: 215F	#1: 215F	-	-	-
B64EMMX 30K-B	ALL	#1: 190F	#1: 190F	#1: 190F	#1: 190F	#1: 190F	#1: 190F	-	-	-
B64EMMX 36K-B	ALL	#1: 190F	#1: 190F	#1: 190F	#1: 190F	#1: 190F	#1: 190F	#1: 190F #2: 190F	-	-
B64EMMX 42K-B	Upflow	#1: 190F	#1: 190F	#1: 190F	#1: 190F	#1: 190F	#1: 190F	#1: 190F #2: 190F	-	-
	Horizontal Right/Left	#1: 190F	#1: 190F	#1: 190F	#1: 190F	#1: 190F	#1: 190F	#1: 190F #2: 190F	-	-
	Downflow	#1: 190F	#1: 190F	#1: 190F	#1: 190F	#1: 190F	#1: 190F	-	-	-
B64EMMX 48K-C	ALL	#1: 190F	#1: 190F	#1: 190F	#1: 190F	#1: 190F	#1: 190F	#1: 190F #2: 190F	#1: 190F #2: 190F	#1: 190F #2: 190F #3: 190F

**Notes:**

All B64 Air Handlers have 2 blower housing limits installed (130F opening temperature), field wired into the low voltage circuit of the H8HK\*A heater kit.

Dashes denote combinations that are not allowed.

Any limit specified other than 190F requires a limit change.

## Limit Switch Combinations for B64EMMX Air Handlers



### GENERAL TERMS OF LIMITED WARRANTY

Nortek Global HVAC, LLC will furnish a replacement for any part of this product which fails in normal use and service within the terms and conditions of the warranty.

For complete details of the Limited Warranty, including applicable terms and conditions, see your local installer or contact the Nortek Global HVAC, LLC warranty department for a copy.

Before purchasing this appliance, read important energy cost and efficiency information available from your retailer. Specifications and illustrations subject to change without notice and without incurring obligations. Printed in U.S.A (02/23)